

ST. PETERSBURG COLLEGE

Fact Book

2025-26

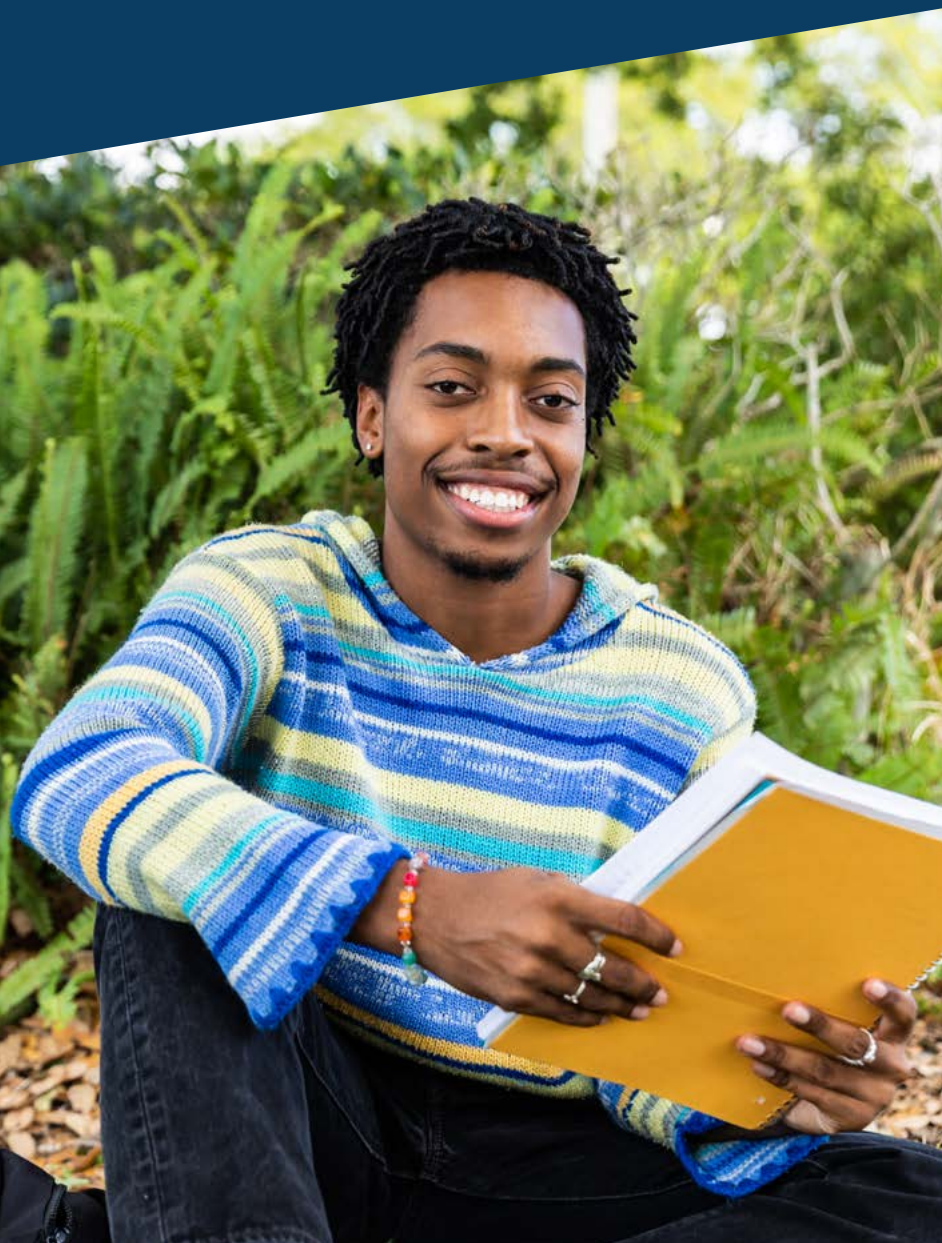


TABLE OF CONTENTS

Introduction		1
SPC Board of Trustees		2
At a Glance		3
Overview		4
Table	1	Opening Fall Headcount Enrollment 5
Table	2	History of Graduates 6
Table	3	Average Age of Opening Fall by Program of Study, Gender, and Type of Attendance 7
Table	4	Annual Full-Time Equivalent (FTE) by Semester and Site (Taught) 8
Table	5	Annual Unduplicated Headcount Enrollment - Credit and Non-Credit 10
Table	6	Annual Unduplicated Headcount Enrollment by Program Code 11
Table	7	Annual Graduates by Program 14
Table	8	Annual Non-Credit Headcount Enrollment 17
Table	9	National and State Licensure Examination Passing Rates 18
Table	10	Placement and Follow-up Report 19
Table	11	Site Acreage and Acquisition Dates 24
Table	12	Site Gross Square Footage and Replacement Costs 25
Table	13	Number of College Employees by Gender 26
Table	14	Number of College Employees by Ethnicity 27
Table	15	Number of Full-time College Employees by Highest Degree Earned 28
Table	16	Distribution of Revenue for General Current Fund- Unrestricted 30
Table	17	College Revenues, Personnel Expenses, Current Expenses, and Capital Outlay 31
Appendix A		Degree and Certificate Program Inventory 32

ST. PETERSBURG COLLEGE
2025-26 FACTBOOK
INTRODUCTION

The 35th edition of the St. Petersburg College Fact Book includes descriptive and statistical information for planning and decision-making as well as a historical perspective on the institution. Where applicable, information appears for multiple years. Topics include data related to the College's student body, academics, personnel, financial position, facilities, and outcomes indicators.

As with any publication, this book is the result of the time and efforts of many people, both in developing the information and producing the final copy. We also want to recognize the dedication of the Institutional Research & Effectiveness staff, which made the publication of this book possible.

Many thanks to all SPC staff who were involved. We hope you will find this Fact Book useful and welcome any suggestions for improving the content or presentation.

SPC BOARD OF TRUSTEES

Year Appointed	Name	Service Period
1968	L. Chauncey Brown■	1968 - May 1970
1968	Arthur Libby Albers	1968 - 1969
1968	James E. Hendry■	1968 - 1975
1968	Harley W. ("Jack") Holland■	1968 - 1969
1968	E. C. Marquardt■	1968 - May 1974
1969	William W. Gilkey	July 1969 - May 1977
1969	W. Richard Johnston	July 1969 - September 1980
1970	Philip Benjamin■	July 1970 - October 1983
1974	Beatrice Lewis■	July 1974 - May 1978
1975	Reina C. Pollack	July 1975 - June 1978
1977	Joseph H. Lang	June 1977 - May 1989
1978	Paul Hatchett	June 1978 - May 1981
1979	Janice Brockus Buchanan	April 1979 - May 1987
1981	Thomas H. Gregory	May 1981 - February 1992
1981	Robert C. Young	August 1981 – June 1990
1983	J. Patrick McElroy	November 1983 - February 1990
1987	Laurel J. Chadwick	January 1988 - February 1992
1989	Stanley A. Brandimore■	May 1989 - May 1993
1990	Joseph H. Lang*■	May 1990 – January 1997
1990	Mac J. Williams■	June 1990 - February 1993
1992	Pamela Jo Davis	March 1992 - May 1999
1992	Demos A. Megaloudis■	March 1992 – Sept. 1996
1993	Ann G. Hines■	May 1993 – April 1999
1993	Robert C. Young*	April 1993 – April 1999
1996	Gary Megaloudis	November 1996 – May 1999
1997	Lacy R. Harwell■	February 1997 – April 1999
1999	Susan D. Jones	April 1999 – May 2006
1999	Kenneth T. Welch	May 1999 – November 2000
1999	Evelyn M. Bilirakis	June 1999 – September 2011
1999	Kenneth P. Burke	June 1999 – April 2012
1999	W. Richard Johnston*	April 1999 – September 2011
2001	Cecil B. Keene■	May 2001 – April 2008 (resigned)
2006	Deveron M. Gibbons	June 2006 – Present (exp. 5/23)
2008	Terrence E. Brett	May 2008 – May 2013
2011	Robert J. Fine Jr.	September 2011 – December 2015
2011	Timothy O. North	September 2011 – October 2012 (resigned)
2012	Jeffery Dale Oliver	December 2012 – October 2016 (resigned)
2013	Lauralee Westine	September 2013 – January 2017 (resigned)
2013	Bridgette Bello	May 2013–December 2015
2015	Bill Foster	December 2015 – May 2019
2015	Nathan Stonecipher	December 2015 – October 2023
2017	Katherine E. Cole	March 2017- Present (exp. 5/21)
2017	Bridgette Bello*	May 2017 –May 2019
2019	Thomas Kidwell	July 2019 - Present (exp. 5/23)
2020	Jason Butts	March 2021 - Present (exp. 5/23)

Bold indicates current trustees

*Reappointment after leave

■Deceased

BOARD ATTORNEYS: Edward A. Turville■, 1968-1983; William W. Gilkey, 1983-1991; William F. Davenport, Jr., 1991-1996; Sylvia H. Walbolt, 1996-2001; Joseph H. Lang■, 2001-2018.

SPC (formerly SPJC) PRESIDENTS: George M. Lynch■, 1927-1935; Robert B. Reed■, 1935-1944; Roland A. Wakefield■, 1944-1950; Michael M. Bennett■, 1950-1978; Carl M. Kuttler, Jr., 1978-2009; William D. Law, Jr., 2010-2017; Tonjua Williams 2017-Present.
Board of Trustees Website: <http://www.spcollege.edu/bot/>

ST. PETERSBURG COLLEGE

At a Glance

College Profile		Staff Resources	
Campuses/Centers	11	All Employees	2,353
College Owned Buildings	161	Faculty	1,190
Acres of Land (Owned & Leased)	382.37	Full-time	273
LEED Certified (Green Buildings)	5	Part-time	917
Fall 2025 College Credit Students		Enrollment (2024-25)	
Overall Headcount	24,640	Credit Enrollment	31,807
Full-Time	29.2%	Non-Credit Enrollment	2,765
Part-Time	70.8%	Total Enrollment	34,572
Gender		Program Enrollment (2024-25)	
Male	36.7%	Baccalaureate	4,877
Female	60.5%	Professional Certificates	92
Race/Ethnicity		Associate in Arts	12,750
White	52.8%	Associate in Science	7,866
Black	13.6%	Advanced Technical Certificates	367
Hispanic	20.2%	College Credit Certificates	1,070
Asian	4.8%	Applied Technology Diploma	2
American Indian	0.3%	Vocational Certificates	228
Pacific Islander	0.2%	Undeclared	7,054
Multiple Races	5.0%	Degrees/Certificates Awarded (2024-25)	
Not Reported	3.1%	Baccalaureate	1,071
Age		Professional Certificates	41
18 & Under	27.6%	Associate in Arts	2,513
19-21	22.1%	Associate in Science	834
22-25	15.7%	Advanced Technical Certificates	176
26-35	19.3%	Technical Certificates	882
36+	15.3%	Applied Technology Diploma	55
Not Reported	0.0%	Vocational Certificates	160
Instructional Method		Largest Degree/Certificate Enrollments (2024-25)	
Face-to-Face	20.3%	Baccalaureate	
Blended	34.8%	Management & Organizational Leadership	923
Online Only	45.0%	Nursing	703
Student Semester Hours		Business Administration	459
Lower Division	181,164	Cybersecurity	405
Upper Division	30,656	Health Services Administration	359
Total	211,820	Associate in Science	
Enrollment Type		Health Sciences	2,374
Continuing	16,573	Business Administration & Management	762
New	6,214	Cyber Security	760
Re-admit	1,853	Nursing	648
Degree Objective		Veterinary Technology	413
AA	10,105	Certificates	
BS/BAS	3,774	Cybersecurity	200
Non-Credential Seeking	4,315	Paramedic	101
AS/Certificates	6,446	Medical Coder	69
Financial Aid Awarded	\$107M	Accounting Technology Operations	58
15,473 students		Healthcare Services	54
Average Student Load	8.6 credits		

Source: PULSE BI

Revised 1/6/2026

ST. PETERSBURG COLLEGE

Overview

Founded in 1927, SPC is Florida's first two-year college and the first to offer bachelor's degrees. SPC offers more than 133 degree and certificate programs, including many high-demand, high-skill industry-recognized workforce certifications. The college's career-focused curriculum is created with input from industry experts to give students the skills they need to meet the needs of today's employers. SPC's Guided Pathways Program gives students a clear roadmap to success to ensure they are taking the right courses in the right sequence, with wrap-around supports to help them achieve their goals. The college's mission is to "empower our students and community to achieve success and economic mobility through academic excellence and engagement."

Degrees and Programs

St. Petersburg College offers the following academic programs:

- About two dozen **bachelor's degrees** that meet local workforce demands in high-needs areas.
- An **Associate in Arts** degree that emphasizes a liberal arts education and prepares students for a bachelor's degree at SPC or to transfer to a four-year college or university.
- Career and technical education programs (**Associate in Science and Certificates**) that lead to well-paying jobs in Pinellas County or furthering one's career.

SPC is accredited by the Southern Association of Colleges and Schools Commission on Colleges which means credits transfer to reputable institutions. NOTE that SPC is currently seeking initial accreditation from the Higher Learning Commission (HLC), with the final HLC Board recommendation occurring in June 2026. If accepted, SPC will switch accrediting bodies at that time.

TABLE 1
OPENING FALL HEADCOUNT ENROLLMENT
CREDIT STUDENTS

Fall	Number	Percent Increase	Fall	Number	Percent Increase	Fall	Number	Percent Increase	Fall	Number	Percent Increase
1927-28	87		1952-53	431	8.6%	1977-78	13,288	2.6%	2002-03*	20,015	10.2%
1928-29	186	113.8%	1953-54	510	18.3%	1978-79	14,445	8.7%	2003-04	21,815	9.0%
1929-30	155	-16.7%	1954-55	750	47.1%	1979-80	14,499	0.4%	2004-05	24,258	11.2%
1930-31	173	11.6%	1955-56	1,579	110.5%	1980-81	15,430	6.4%	2005-06	24,778	2.1%
1931-32	185	6.9%	1956-57	2,112	33.8%	1981-82	16,106	4.4%	2006-07	25,316	2.2%
1932-33	211	14.1%	1957-58	2,372	12.3%	1982-83	16,358	1.6%	2007-08	26,165	3.4%
1933-34	285	35.1%	1958-59	2,740	15.5%	1983-84	16,617	1.6%	2008-09	27,076	3.5%
1934-35	353	23.9%	1959-60	3,324	21.3%	1984-85	15,865	-4.5%	2009-10	29,560	9.2%
1935-36	368	4.2%	1960-61	3,599	8.3%	1985-86	16,064	1.3%	2010-11	32,429	9.7%
1936-37	323	-12.2%	1961-62	4,188	16.4%	1986-87	16,213	0.9%	2011-12	33,480	3.2%
1937-38	341	5.6%	1962-63	5,021	19.9%	1987-88	16,599	2.4%	2012-13	32,595	-2.6%
1938-39	335	-1.8%	1963-64	5,320	6.0%	1988-89	17,919	8.0%	2013-14	31,452	-3.5%
1939-40	389	16.1%	1964-65	6,239	17.3%	1989-90	18,019	0.6%	2014-15■	32,928	4.7%
1940-41	385	-1.0%	1965-66	8,187	31.2%	1990-91	18,719	3.9%	2015-16♦	31,853	-3.3%
1941-42	317	-17.7%	1966-67	8,699	6.3%	1991-92	19,271	2.9%	2016-17	30,473	-4.3%
1942-43	159	-49.8%	1967-68	9,072	4.3%	1992-93	20,793	7.9%	2017-18	30,071	-1.3%
1943-44	98	-38.4%	1968-69	9,537	5.1%	1993-94	20,482	-1.5%	2018-19	29,203	-2.9%
1944-45	137	39.8%	1969-70	9,509	-0.3%	1994-95	19,662	-4.0%	2019-20	28,841	-1.2%
1945-46	185	35.0%	1970-71	9,815	3.2%	1995-96	19,207	-2.3%	2020-21	26,441	-8.3%
1946-47	452	144.3%	1971-72	9,978	1.7%	1996-97	17,535	-8.7%	2021-22	24,591	-7.0%
1947-48	460	1.8%	1972-73	9,398	-5.8%	1997-98	17,575	0.2%	2022-23	23,464	-4.6%
1948-49	398	-13.5%	1973-74	9,759	3.8%	1998-99	17,137	-2.5%	2023-24	23,379	-0.4%
1949-50	479	20.4%	1974-75	10,675	9.4%	1999-00	16,933	-1.2%	2024-25	23,918	2.3%
1950-51	451	-5.8%	1975-76	12,546	17.5%	2000-01	17,061	0.8%	2025-26	24,640	3.0%
1951-52	397	-12.0%	1976-77	12,953	3.2%	2001-02	18,156	6.4%			

Note: Students with an unknown home campus were excluded.

*Beginning Fall 2002, college total includes upper division students.

■Beginning Fall 2014, data displayed reflects the first business day in September.

♦Beginning Fall 2015, data displayed reflects PULSE BI

Source: Student Database / PULSE BI

Revised: 1/7/2026

**TABLE 2
HISTORY OF GRADUATES**

Reporting Year	Number	Percent Increase	Reporting Year	Number	Percent Increase	Reporting Year	Number	Percent Increase	Reporting Year	Number	Percent Increase	Reporting Year	Number	Percent Increase
1928-29*	50		1951-52	88	2.3%	1974-75	1,953	6.1%	1997-98	2,733	12.1%	2020-21	7,213	5.3%
1929-30*	43	-14.0%	1952-53	88	0.0%	1975-76	1,917	-1.8%	1998-99	2,817	3.1%	2021-22	6,257	-13.3%
1930-31*	38	-11.6%	1953-54	98	11.4%	1976-77	2,042	6.5%	1999-00	2,949	4.7%	2022-23	5,831	-6.8%
1931-32*	62	63.2%	1954-55	90	-8.2%	1977-78	2,009	-1.6%	2000-01	3,021	2.4%	2023-24	5,634	-3.4%
1932-33*	49	-21.0%	1955-56	142	57.8%	1978-79	2,080	3.5%	2001-02	3,065	1.5%	2024-25	5,731	1.7%
1933-34*	73	49.0%	1956-57	161	13.4%	1979-80	2,065	-0.7%	2002-03	3,226	5.3%			
1934-35*	64	-12.3%	1957-58	221	37.3%	1980-81	2,107	2.0%	2003-04■	3,416	5.9%			
1935-36*	81	26.6%	1958-59	187	-15.4%	1981-82	2,579	22.4%	2004-05	3,444	0.8%			
1936-37*	91	12.3%	1959-60	220	17.6%	1982-83	2,243	-13.0%	2005-06	3,745	8.7%			
1937-38*	111	22.0%	1960-61	259	17.7%	1983-84	2,448	9.1%	2006-07	3,924	4.8%			
1938-39*	101	-9.0%	1961-62	313	20.8%	1984-85	2,251	-8.0%	2007-08	4,045	3.1%			
1939-40*	111	9.9%	1962-63	437	39.6%	1985-86	1,992	-11.5%	2008-09	4,295	6.2%			
1940-41*	123	10.8%	1963-64	476	8.9%	1986-87	2,100	5.4%	2009-10	4,753	10.7%			
1941-42*	84	-31.7%	1964-65	597	25.4%	1987-88	2,244	6.9%	2010-11	5,271	10.9%			
1942-43*	17	-79.8%	1965-66	791	32.5%	1988-89	2,284	1.8%	2011-12	5,807	10.2%			
1943-44*	25	47.1%	1966-67	979	23.8%	1989-90	2,336	2.3%	2012-13	6,105	5.1%			
1944-45*	29	16.0%	1967-68	1,257	28.4%	1990-91	2,678	14.6%	2013-14	6,003	-1.7%			
1945-46	44	51.7%	1968-69	1,590	26.5%	1991-92	2,720	1.6%	2014-15	6,242	4.0%			
1946-47	53	20.5%	1969-70	1,836	15.5%	1992-93	2,568	-5.6%	2015-16♦	8,109	29.9%			
1947-48	108	103.8%	1970-71	1,991	8.4%	1993-94	2,596	1.1%	2016-17	7,666	-5.5%			
1948-49	85	-21.3%	1971-72	1,943	-2.4%	1994-95	2,612	0.6%	2017-18	7,286	-5.0%			
1949-50	88	3.5%	1972-73	1,740	-10.4%	1995-96	2,715	3.9%	2018-19	6,948	-4.6%			
1950-51	86	-2.3%	1973-74	1,840	5.7%	1996-97	2,437	-10.2%	2019-20	6,848	-1.4%			

*Diplomas were awarded to graduates thru 1944-45 school year.

After 1944-1945 Associates in Arts degrees were awarded.

■Beginning 2003-2004, the college total includes upper division graduates.

♦Beginning 2015-2016, data displayed represents PULSE BI

Source: Student Database (AA-1A report) / PULSE BI

Revised: 12/12/2025

TABLE 3
AVERAGE AGE OF OPENING FALL BY PROGRAM OF STUDY, GENDER
AND TYPE OF ATTENDANCE
CREDIT STUDENTS

Year	Program	Males		Females		All Students
		<u>F/T</u>	<u>P/T</u>	<u>F/T</u>	<u>P/T</u>	<u>FT and PT</u>
Fall 2018*	A.A. Degree	22.1	24.7	22.3	27.0	24.7
	Workforce Education	27.6	30.8	28.0	31.4	30.4
	Baccalaureate Degree	31.6	35.4	31.1	35.9	34.3
	Undeclared	19.1	23.7	18.3	23.1	22.2
	All Students	24.7	27.9	25.0	29.4	27.6
Fall 2019	A.A. Degree	22.3	25.0	22.5	26.8	24.7
	Workforce Education	27.5	31.2	28.5	31.5	30.6
	Baccalaureate Degree	31.1	35.3	30.7	36.0	34.1
	Undeclared	18.7	25.1	18.7	24.8	23.6
	All Students	24.4	28.3	25.0	29.5	27.7
Fall 2020	A.A. Degree	22.2	24.8	22.3	26.6	24.6
	Workforce Education	27.2	30.9	27.7	31.5	30.4
	Baccalaureate Degree	31.1	35.0	31.3	35.8	34.0
	Undeclared	18.6	23.2	18.1	23.0	21.9
	All Students	24.3	27.7	24.8	29.2	27.5
Fall 2021	A.A. Degree	20.7	23.8	21.1	25.5	23.5
	Workforce Education	25.7	30.1	26.8	30.4	29.4
	Baccalaureate Degree	28.8	33.5	29.9	34.8	32.8
	Undeclared	17.3	24.5	17.3	23.2	22.4
	All Students	22.8	27.2	23.6	28.2	26.6
Fall 2022	A.A. Degree	21.7	24.7	22.4	26.4	24.4
	Workforce Education	27.8	30.6	28.1	31.6	30.4
	Baccalaureate Degree	29.9	35.0	30.7	36.3	34.0
	Undeclared	18.7	23.2	18.2	23.3	22.2
	All Students	24.0	27.3	24.8	29.0	27.2
Fall 2023	A.A. Degree	21.8	24.4	22.1	26.4	24.2
	Workforce Education	26.8	30.5	27.6	31.2	30.1
	Baccalaureate Degree	29.5	34.7	30.6	36.0	33.8
	Undeclared	18.2	22.9	18.2	23.0	21.8
	All Students	23.5	27.0	24.1	28.8	26.8
Fall 2024	A.A. Degree	21.5	23.9	21.5	25.6	23.7
	Workforce Education	25.9	29.4	26.1	30.5	29.2
	Baccalaureate Degree	28.7	34.2	30.2	35.2	33.0
	Undeclared	17.8	26.9	17.8	23.4	23.7
	All Students	23.0	27.4	23.4	28.1	26.5
Fall 2025	A.A. Degree	21.7	23.9	21.5	25.7	23.6
	Workforce Education	26.8	29.8	26.3	30.6	29.4
	Baccalaureate Degree	28.8	34.3	30.0	35.5	33.0
	Undeclared	17.7	24.5	17.6	22.4	22.2
	All Students	23.4	26.8	23.3	28.0	26.3

F/T = Full-time

P/T = Part-time

Note: Students with an unknown gender were excluded.

*Beginning Fall 2018, data displayed reflects the Student Database data.

Source: Student Database

Revised: 1/6/2026

TABLE 4
ANNUAL FULL-TIME EQUIVALENT (FTE) BY SEMESTER AND SITE (TAUGHT)

	2023-24				2024-25			
	END <u>SUMMER</u>	END <u>FALL</u>	END <u>SPRING</u>	TOTAL <u>YEAR</u>	END <u>SUMMER</u>	END <u>FALL</u>	END <u>SPRING</u>	TOTAL <u>YEAR</u>
EpiCenter								
Lower Division Advanced & Professional*	2.3	215.7	226.0	444.0	1.8	256.6	246.4	504.8
Upper Division Advanced & Professional*	10.9	46.3	48.0	105.2	10.5	40.7	43.6	94.8
Postsecondary Vocational	51.9	96.2	106.0	254.1	50.0	86.7	82.2	218.9
College Preparatory	0.0	0.0	0.0	0.0	0.0	0.0	0.0	0.0
Continuing Workforce Education	0.0	0.0	0.0	0.0	0.0	0.0	0.0	0.0
Postsecondary Adult Vocational	0.0	14.0	13.9	27.9	0.0	16.2	14.8	31.0
Apprenticeship	0.0	0.0	7.2	7.2	0.0	0.0	0.0	0.0
Total FTE	65.1	372.2	401.1	838.4	62.3	400.2	387.0	849.5
% of College-wide Total	3.0%	5.8%	6.5%	5.7%	2.8%	6.2%	6.4%	5.8%
Clearwater								
Lower Division Advanced & Professional*	271.2	865.1	796.5	1,932.8	262.2	856.5	806.4	1,925.1
Upper Division Advanced & Professional*	46.0	116.4	120.1	282.5	48.3	113.5	109.6	271.4
Postsecondary Vocational	133.1	332.9	286.3	752.3	119.8	303.8	279.2	702.8
College Preparatory	1.3	26.5	20.0	47.8	2.0	28.7	10.9	41.6
Continuing Workforce Education	0.0	0.0	0.0	0.0	0.0	0.0	0.0	0.0
Postsecondary Adult Vocational	0.0	0.0	0.0	0.0	0.0	0.0	0.0	0.0
Total FTE	451.6	1,340.9	1,222.9	3,015.4	432.3	1,302.5	1,206.1	2,940.9
% of College-wide Total	20.7%	20.8%	19.7%	20.4%	19.7%	20.1%	19.9%	19.9%
St. Petersburg/Gibbs								
Lower Division Advanced & Professional*	218.8	665.9	614.7	1,499.4	208.4	683.0	613.2	1,504.6
Upper Division Advanced & Professional*	73.3	175.2	182.5	431.0	67.8	177.3	195.0	440.1
Postsecondary Vocational	156.2	404.0	373.0	933.2	144.2	364.1	354.2	862.5
College Preparatory	21.7	80.3	66.8	168.8	24.9	80.9	61.3	167.1
Continuing Workforce Education	0.0	0.0	0.0	0.0	0.0	0.0	0.0	0.0
Total FTE	470.0	1,325.4	1,237.0	3,032.4	445.3	1,305.3	1,223.7	2,974.3
% of College-wide Total	21.6%	20.6%	20.0%	20.5%	20.3%	20.1%	20.2%	20.2%
Seminole								
Lower Division Advanced & Professional*	318.5	1,060.2	1,096.8	2,475.5	412.4	1,171.8	1,030.2	2,614.4
Upper Division Advanced & Professional*	119.3	286.3	272.4	678.0	133.7	259.6	272.5	665.8
Postsecondary Vocational	61.4	148.2	309.0	518.6	136.3	287.0	305.8	729.1
College Preparatory	4.5	43.9	33.0	81.4	4.3	51.4	43.0	98.7
Continuing Workforce Education	0.0	0.0	0.0	0.0	0.0	0.0	0.0	0.0
Total FTE	503.7	1,538.6	1,711.2	3,753.5	686.7	1,769.8	1,651.5	4,108.0
% of College-wide Total	23.1%	23.9%	27.6%	25.3%	31.2%	27.3%	27.2%	27.9%
Tarpon Springs								
Lower Division Advanced & Professional*	213.1	674.2	539.9	1,427.2	163.5	598.3	556.5	1,318.3
Upper Division Advanced & Professional*	37.1	92.7	77.8	207.6	31.6	114.9	97.5	244.0
Postsecondary Vocational	39.7	128.2	116.6	284.5	43.2	132.4	121.4	297.0
College Preparatory	7.6	16.3	16.7	40.6	6.5	14.2	12.9	33.6
Continuing Workforce Education	0.0	0.0	0.0	0.0	0.0	0.0	0.0	0.0
Total FTE	297.5	911.4	751.0	1,959.9	244.8	859.8	788.3	1,892.9
% of College-wide Total	13.6%	14.2%	12.1%	13.2%	11.1%	13.3%	13.0%	12.8%
Bay Pines Center								
Lower Division Advanced & Professional*	0.0	1.2	1.9	3.1	0.0	1.3	0.3	1.6
Upper Division Advanced & Professional*	0.0	0.1	0.1	0.2	0.1	0.2	0.5	0.8
Postsecondary Vocational	0.0	0.0	0.0	0.0	0.0	0.0	0.0	0.0
College Preparatory	0.0	0.0	0.0	0.0	0.0	0.0	0.0	0.0
Continuing Workforce Education	0.0	0.0	0.0	0.0	0.0	0.0	0.0	0.0
Postsecondary Adult Vocational	0.0	0.0	0.0	0.0	0.0	0.0	0.0	0.0
Total FTE	0.0	1.3	2.0	3.3	0.1	1.5	0.8	2.4
% of College-wide Total	0.0%	0.0%	0.0%	0.0%	0.0%	0.0%	0.0%	0.0%
Health Education								
Lower Division Advanced & Professional*	1.8	1.2	1.3	4.3	1.2	0.9	1.2	3.3
Upper Division Advanced & Professional*	77.0	185.6	191.3	453.9	79.6	211.5	198.5	489.6
Postsecondary Vocational	119.6	358.1	334.8	812.5	111.9	330.3	333.3	775.5
College Preparatory	0.0	0.0	0.0	0.0	0.0	0.0	0.0	0.0
Continuing Workforce Education	0.0	0.0	0.0	0.0	0.0	0.0	0.0	0.0
Postsecondary Adult Vocational	0.0	0.0	0.0	0.0	0.0	0.0	0.0	0.0
Apprenticeship	0.0	0.0	0.0	0.0	0.0	0.0	0.0	0.0
Total FTE	198.4	544.9	527.4	1,270.7	192.7	542.7	533.0	1,268.4
% of College-wide Total	9.1%	8.5%	8.5%	8.6%	8.8%	8.4%	8.8%	8.6%

TABLE 4 Continued
ANNUAL FULL-TIME EQUIVALENT (FTE) BY SEMESTER AND SITE (TAUGHT)

	2023-24				2024-25			
	END <u>SUMMER</u>	END <u>FALL</u>	END <u>SPRING</u>	TOTAL <u>YEAR</u>	END <u>SUMMER</u>	END <u>FALL</u>	END <u>SPRING</u>	TOTAL <u>YEAR</u>
Allstate Center								
Lower Division Advanced & Professional*	0.0	0.0	0.0	0.0	0.0	0.0	0.0	0.0
Upper Division Advanced & Professional*	0.0	0.0	0.0	0.0	0.0	0.0	0.0	0.0
Postsecondary Vocational	13.9	18.4	37.7	70.0	28.4	28.0	36.2	92.6
College Preparatory	0.0	0.0	0.0	0.0	0.0	0.0	0.0	0.0
Continuing Workforce Education	0.0	0.0	0.0	0.0	0.0	0.0	0.0	0.0
Postsecondary Adult Vocational	16.2	60.0	82.6	158.8	25.5	64.6	60.1	150.2
Apprenticeship	60.0	34.4	35.0	129.4	9.3	9.3	0.0	18.6
Total FTE	90.1	112.8	155.3	358.2	63.2	101.9	96.3	261.4
% of College-wide Total	4.1%	1.8%	2.5%	2.4%	2.9%	1.6%	1.6%	1.8%
Downtown Center								
Lower Division Advanced & Professional*	26.0	85.6	59.2	170.8	26.7	73.5	55.5	155.7
Upper Division Advanced & Professional*	1.3	0.5	4.3	6.1	1.2	3.2	0.0	4.4
Postsecondary Vocational	6.1	17.1	27.0	50.2	9.4	22.7	26.4	58.5
College Preparatory	1.8	2.7	5.4	9.9	1.0	2.9	6.1	10.0
Continuing Workforce Education	0.0	0.0	0.0	0.0	0.0	0.0	0.0	0.0
Total FTE	35.2	105.9	95.9	237.0	38.3	102.3	88.0	228.6
% of College-wide Total	1.6%	1.6%	1.5%	1.6%	1.7%	1.6%	1.4%	1.5%
Midtown Center								
Lower Division Advanced & Professional*	11.0	19.9	22.6	53.5	6.7	28.9	26.8	62.4
Upper Division Advanced & Professional*	0.0	16.1	7.6	23.7	2.8	16.3	11.9	31.0
Postsecondary Vocational	24.8	55.7	62.1	142.6	23.3	47.3	55.6	126.2
College Preparatory	0.0	2.0	0.0	2.0	0.0	2.9	1.0	3.9
Continuing Workforce Education	0.0	0.0	0.0	0.0	0.0	0.0	0.0	0.0
Total FTE	35.8	93.7	92.3	221.8	32.8	95.4	95.3	223.5
% of College-wide Total	1.6%	1.5%	1.5%	1.5%	1.5%	1.5%	1.6%	1.5%
Veterinary Technology								
Lower Division Advanced & Professional*	0.0	0.0	0.0	0.0	0.0	0.0	0.0	0.0
Upper Division Advanced & Professional*	1.3	13.4	0.0	14.7	0.0	0.0	0.0	0.0
Postsecondary Vocational	31.7	73.2	0.0	104.9	0.0	0.0	0.0	0.0
College Preparatory	0.0	0.0	0.0	0.0	0.0	0.0	0.0	0.0
Continuing Workforce Education	0.0	0.0	0.0	0.0	0.0	0.0	0.0	0.0
Total FTE	33.0	86.6	0.0	119.6	0.0	0.0	0.0	0.0
% of College-wide Total	1.5%	1.3%	0.0%	0.8%	0.0%	0.0%	0.0%	0.0%
College-wide								
Lower Division Advanced & Professional*	1,062.7	3,589.0	3,358.9	8,010.6	1,082.9	3,670.8	3,336.5	8,090.2
Upper Division Advanced & Professional*	366.2	932.6	904.1	2,202.9	375.6	937.2	929.1	2,241.9
Postsecondary Vocational	638.4	1,632.0	1,652.5	3,922.9	666.5	1,602.3	1,594.3	3,863.1
College Preparatory	36.9	171.7	141.9	350.5	38.7	181.0	135.2	354.9
Continuing Workforce Education	0.0	0.0	0.0	0.0	0.0	0.0	0.0	0.0
Postsecondary Adult Vocational	16.2	74.0	96.5	186.7	25.5	80.8	74.9	181.2
Apprenticeship	60.0	34.4	42.2	136.6	9.3	9.3	0.0	18.6
Total FTE	2,180.4	6,433.7	6,196.1	14,810.2	2,198.5	6,481.4	6,070.0	14,749.9

*Funded FTE excludes: 1) Recreation and Leisure courses, 2) Lifelong Learning courses, 3) Courses for which the direct instructional costs have been fully funded by an external agency, 4) Students enrolled in the same College Preparatory or College Credit course more than two times, 5) Students designated as an inmate or adult with a disability that did not pay fees, and 6) Students who received an Unauthorized Fee Wavier.

Source: Student Database (FTE-3 Reports - FTSITFF, FTESITF)
Revised: 12/18/2025

TABLE 5
ANNUAL UNDUPLICATED HEADCOUNT ENROLLMENT
CREDIT AND NON-CREDIT STUDENTS

Reporting Year	Credit		Non-Credit		Total	Reporting Year	Credit		Non-Credit		Total
	Number	Percent	Number	Percent			Number	Percent	Number	Percent	
1972-73	13,071	55.1%	10,670	44.9%	23,741	1999-00	31,080	53.4%	27,125	46.6%	58,205
1973-74	14,475	56.5%	11,160	43.5%	25,635	2000-01	31,079	51.2%	29,622	48.8%	60,701
1974-75	16,104	56.6%	12,371	43.4%	28,475	2001-02	31,928	51.1%	30,537	48.9%	62,465
1975-76	18,175	56.6%	13,916	43.4%	32,091	2002-03	34,249	51.3%	32,562	48.7%	66,811
1976-77	18,595	56.2%	14,507	43.8%	33,102	2003-04	35,310	52.2%	32,283	47.8%	67,593
1977-78	19,772	52.0%	18,252	48.0%	38,024	2004-05	35,497	56.4%	27,424	43.6%	62,921
1978-79	22,494	55.6%	17,955	44.4%	40,449	2005-06	35,400	60.9%	22,773	39.1%	58,173
1979-80	23,085	55.3%	18,681	44.7%	41,766	2006-07	36,133	58.3%	25,797	41.7%	61,930
1980-81	24,192	55.6%	19,353	44.4%	43,545	2007-08	36,985	59.5%	25,215	40.5%	62,200
1981-82	25,704	51.8%	23,965	48.2%	49,669	2008-09	37,273	60.7%	24,128	39.3%	61,401
1982-83	25,450	60.5%	16,603	39.5%	42,053	2009-10	42,280	68.6%	19,312	31.4%	61,592
1983-84	26,251	60.8%	16,957	39.2%	43,208	2010-11	45,333	70.7%	18,761	29.3%	64,094
1984-85	26,569	62.9%	15,680	37.1%	42,249	2011-12	45,914	70.9%	18,867	29.1%	64,781
1985-86	27,371	64.7%	14,910	35.3%	42,281	2012-13	44,257	72.7%	16,652	27.3%	60,909
1986-87	29,947	62.2%	18,200	37.8%	48,147	2013-14	43,864	76.7%	13,349	23.3%	57,213
1987-88	30,067	57.0%	22,695	43.0%	52,762	2014-15	44,411	77.4%	12,943	22.6%	57,354
1988-89	32,251	57.6%	23,780	42.4%	56,031	2015-16	42,078	78.8%	11,294	21.2%	53,372
1989-90	28,838	51.6%	26,998	48.4%	55,836	2016-17	40,661	83.0%	8,345	17.0%	49,006
1990-91*	34,862	65.9%	18,050	34.1%	52,912	2017-18	39,507	84.6%	7,199	15.4%	46,706
1991-92	35,134	61.1%	22,392	38.9%	57,526	2018-19	38,770	85.7%	6,446	14.3%	45,216
1992-93	36,024	61.1%	22,909	38.9%	58,933	2019-20	38,006	87.9%	5,217	12.1%	43,223
1993-94	37,135	56.7%	28,351	43.3%	65,486	2020-21	35,571	90.0%	3,969	10.0%	39,540
1994-95	34,748	53.2%	30,586	46.8%	65,334	2021-22	33,023	91.4%	3,114	8.6%	36,137
1995-96	32,877	54.1%	27,925	45.9%	60,802	2022-23	31,569	92.5%	2,542	7.5%	34,111
1996-97	32,327	56.8%	24,623	43.2%	56,950	2023-24	31,334	91.0%	3,115	9.0%	34,449
1997-98	31,445	56.2%	24,480	43.8%	55,925	2024-25	31,807	92.0%	2,765	8.0%	34,572
1998-99	31,118	55.2%	25,252	44.8%	56,370						

*There were several types of course categories within the credit and non-credit system; prior to 1990-91, the headcount number for non-credit students represented an unduplicated count within each of the various non-credit course categories. Beginning 1990-91, the unduplicated headcount number represents an unduplicated count between all non-credit course categories. However, the potential of duplication between credit and non-credit, i.e., a student who takes both credit and non-credit courses are counted twice.

■Beginning Fall 2002, the total includes upper division students.

Source: 1969-70 to 1976-77, "Report for Florida Community Colleges"
Source: Student Database (AA-1 Report Series)
Source: Starting 2015-16 Credit Students reflect PULSE BI
Revised: 12/18/2025

TABLE 6
ANNUAL UNDUPLICATED HEADCOUNT ENROLLMENT BY PROGRAM CODE

Active program specializations are listed under each CIP code. Only programs that were active in the most recent year are shown. The specializations are indented and italicized for easier readability.

Florida						
CIP Code	BACCALAUREATE DEGREES (BAS, BS)	2020-21	2021-22	2022-23	2023-24	2024-25
1102601011	Biology	164	150	147	149	161
1105202011	Business Administration	632	506	497	455	459
1101110034	Cybersecurity	94	202	293	379	405
1105105041	Dental Hygiene	179	160	120	103	108
1101399991	Educational Studies	551	509	417	340	302
1101312021	Elementary Education with Reading Endorsement	169	178	238	189	192
1101310011	Exceptional Student Education with Reading Endorsement	33	39	43	43	44
1105122111	Health Services Administration	551	495	452	414	359
1104400001	Human Services			*	134	245
1105211011	International Business	0	1	1	0	0
1105202991	Management & Organizational Leadership	1088	1056	1006	983	923
1101313165	Middle Grades General Science Education 5-9	2	1	0	0	0
1101313112	Middle Grades Mathematics Education 5-9	2	5	2	0	0
1105138012	Nursing	788	669	635	645	703
1105123071	Orthotics and Prosthetics	0	0	0	0	0
1102203022	Paralegal Studies	101	107	107	106	97
1101312101	Pre-Kindergarten/ Primary Education	0	0	0	8	43
1104404011	Public Policy & Administration	157	120	108	102	95
1104399991	Public Safety Administration	380	332	296	229	196
1101313221	Secondary Biology Teacher Education	1	1	0	0	0
1101313111	Secondary Mathematics Teacher Education	10	8	9	10	10
1100302991	Sustainability Management	165	144	134	119	101
1101110051	Technology Development & Management	504	435	370	354	335
1105108081	Veterinary Technology	138	128	120	109	88
5551399990	Educator Preparation Institute - Impact	19	19	7	10	10
	Total Inactive Baccalaureate Degree Programs	0	0	0	0	1
	TOTAL BACCALAUREATE DEGREES	5,728	5,265	5,002	4,881	4,877
	PROFESSIONAL CERTIFICATES	2020-21	2021-22	2022-23	2023-24	2024-25
5552203020	Paralegal Studies	61	46	42	48	46
5555202990	Project Management	41	35	46	38	32
5550183010	Veterinary Practice Management	17	12	17	21	14
	TOTAL PROFESSIONAL CERTIFICATES	119	93	105	107	92
1192401010	ASSOCIATE IN ARTS DEGREE (AA)	2020-21	2021-22	2022-23	2023-24	2024-25
	TOTAL ASSOCIATE IN ARTS DEGREES	13,054	12,339	12,322	12,495	12,750
	ASSOCIATE IN SCIENCE DEGREES (AS)	2020-21	2021-22	2022-23	2023-24	2024-25
1604090100	Architectural Design & Construction Technology	136	116	122	130	148
1649010401	Aviation Maintenance Management (teach out)	1	0	0	0	0
1615040102	Biomedical Engineering Technology	77	55	47	33	47
1341010100	Biotechnology Laboratory Tech	92	72	42	56	65
1552020102	Business Administration & Management	990	860	779	718	762
1511090200	Cloud Computing Technology				*	28
1511010307	Computer Information Technology	269	246	222	193	196
1511100112	Computer Networking	152	120	97	85	65
1511020101	Computer Programming and Analysis	396	328	353	328	259
1743040600	Crime Scene Technology	181	165	136	71	31
1743010302	Criminal Justice Technology	174	112	65	160	167
1511100307	Cyber Security	588	615	653	748	760
1530700100	Data Science	69	100	131	149	191
1351060200	Dental Hygiene	93	80	71	69	67
1743040300	Digital Forensics and Computer Investigations	101	75	72	40	19
1611080103	Digital Media/Multimedia Technology	330	303	208	213	215
1615130102	Drafting and Design Technology	1	0	0	0	0
1413121004	Early Childhood Education	230	205	139	67	32
1743030200	Emergency Administration & Management	39	39	37	59	49
1351090402	Emergency Medical Services	180	120	126	111	85
1615000001	Engineering Technology	137	111	107	109	107
1703010401	Environmental Science Technology	125	80	76	57	22

TABLE 6 Continued

Florida CIP Code	ASSOCIATE IN SCIENCE DEGREES (AS)	2020-21	2021-22	2022-23	2023-24	2024-25
1252080300	Financial Services Banking	0	0	0	0	0
1743020112	Fire Science Technology	111	100	72	26	9
1312030100	Funeral Services	488	466	195	132	99
1351070708	Health Information Management	0	0	0	0	0
1351070700	Health Information Technology	138	112	97	93	101
1351070101	Health Sciences	2,626	2,052	1,837	2,103	2,374
1252090101	Hospitality & Tourism Management	127	113	98	95	53
1652020501	Industrial Management Technology	6	3	2	1	3
1351100405	Medical Laboratory Technology	■	■	■	■	■
1650091300	Music Production Technology	165	188	198	176	183
1507030401	Network Administrator	■	■	■	■	■
1351380100	Nursing, R.N.	924	903	756	676	648
1351230703	Orthotics & Prosthetics Technology	10	9	0	0	0
1722030200	Paralegal Studies	208	182	167	183	222
1650060500	Photographic Technology	6	0	0	0	0
1351080601	Physical Therapist Assistant	63	63	58	46	32
1351091100	Radiography	66	60	66	72	66
1351090800	Respiratory Care	59	49	47	47	49
1713100301	Sign Language Interpretation	0	0	0	0	0
1451159901	Social and Human Services	311	297	261	243	198
1351090901	Surgical Services				21	22
1511100507	Technology Management	1	0	0	0	0
1301830100	Veterinary Technology	468	443	461	419	413
1511100400	Web Development	128	123	110	99	79
	Total Inactive Associate in Science Degree Programs	0	0	0	0	5
	TOTAL ASSOCIATE IN SCIENCE DEGREES	10,266	8,965	7,908	7,828	7,866
	ADVANCED TECHNICAL CERTIFICATES (ATC)	2020-21	2021-22	2022-23	2023-24	2024-25
1451159967	Applied Mental Health ATC			*	11	16
0530710266	Business Analyst ATC			*	7	8
0743030267	Emergency Management ATC				0	1
0312030166	Funeral Arts	38	27	23	12	9
0351070767	Health Data Management ATC	0	0	0	0	0
0341010166	Laboratory Specialist ATC	237	301	336	342	319
0652020966	Supply Chain Management ATC	3	6	3	7	4
0413121066	Training and Development ATC			*	3	10
	Total Inactive Advanced Technical Certificate Programs	0	0	0	0	1
	TOTAL ADVANCED TECHNICAL CERTIFICATES	278	334	362	382	367
	COLLEGE CREDIT CERTIFICATES	2020-21	2021-22	2022-23	2023-24	2024-25
0552030203	Accounting Technology Operations	79	55	51	47	58
0451150100	Addiction Studies	65	54	43	34	14
0511020113	AI Responsible Use					7
0511010200	AI Responsible Use Practitioner					8
0610020301	Audio Production & Engineering	*	16	24	23	21
0650060209	Audio Technology	0	0	0	0	0
0552070306	Business Development and Entrepreneurship	12	39	30	30	26
0552070308	Business Entrepreneurship	8	11	10	7	11
0552070101	Business Administration	47	42	40	41	37
0552020104	Business Operations, Marketing	29	21	28	19	24
0341010101	Biotechnology Laboratory Specialist				3	9
0511100114	Cisco Certified Network Associate	33	24	19	14	9
0511100116	Cloud Computing Certificate				14	12
0451150400	Community Health Worker	15	9	12	9	10
0615130304	Computer-Aided Design & Drafting	42	39	36	37	28
0511020103	Computer Programming Specialist	65	45	33	24	23
0511020200	Computer Programmer	86	64	66	50	29
0511100121	Computer Support Certificate	10	3	2	0	0
0743040600	Crime Scene Technician	53	51	36	37	39
0743010304	Computer Related Crime Investigations	26	20	11	12	18
0511100311	Cyber Security	198	218	289	252	200
0610010507	Digital Media/Multimedia Video Foundations	6	10	4	10	7
0609070210	Digital Media/Multimedia Video Production	16	10	11	15	14
0650010208	Digital Media/Multimedia Web Production	6	6	5	6	8
0609070219	<i>Digital Media/Multi-media Presentation</i>	<i>4</i>	<i>2</i>	<i>1</i>	<i>0</i>	<i>0</i>
0650010208	<i>Digital Graphic</i>	<i>2</i>	<i>4</i>	<i>4</i>	<i>6</i>	<i>8</i>

TABLE 6 Continued

Florida CIP Code		COLLEGE CREDIT CERTIFICATES	2020-21	2021-22	2022-23	2023-24	2024-25
0615130101	Drafting Technology		1	0	0	0	0
0650060501	Digital Photography		0	9	17	23	16
0419070904	Early Child Development		15	16	13	16	30
0615030313	Electronics Aide		3	2	3	5	3
0743030201	Emergency Administration & Management		6	8	6	4	5
0615000007	Engineering Technology Support		6	7	4	3	2
0252090905	Event Planning Management		3	8	5	9	4
0715020102	Field Survey Technician					2	4
0743020111	Fire Officer Supervisor		3	2	1	2	3
0252090503	Food and Beverage Management		3	4	1	2	12
0252090507	Food and Beverage Specialist		0	1	0	0	0
0552070303	Green Innovations and Social Entrepreneurship						3
0351070102	Healthcare Services		71	59	67	50	54
0351070712	Healthcare Informatics		11	11	9	8	4
0511010313	Help Desk Support Specialist		23	39	19	26	21
0743011202	Homeland Security		6	4	10	7	7
0419070907	Infant Toddler Specialization		1	1	2	3	4
0615070203	Lean-Six Sigma Green Belt		4	4	1	2	0
0511100122	Network Administration		13	19	10	13	14
0552020103	Management / Leadership		13	10	7	7	8
0511100112	Microsoft Certified IT Professional: Server Administrator		0	0	0	0	0
0615000013	Mechatronics		2	6	8	12	7
0615040108	Medical Device Design & Manufacturing		*	1	1	2	0
0615040109	Medical Device Networking and Cybersecurity		*	2	1	3	1
0615040107	Medical Equipment Repair		5	3	9	11	7
0641010105	Medical Quality Systems		0	0	0	0	0
0351071404	Medical Coder		98	95	72	65	69
0351090405	Paramedic		1	0	37	86	101
0419070908	Preschool Specialization		7	6	9	6	5
0615130211	Rapid Prototyping and Design		9	5	6	7	4
0552021501	Risk Management and Insurance		4	5	9	8	13
0252090402	Rooms Division Management		3	2	0	2	4
0252090405	Rooms Division Specialist		0	0	0	0	0
0252090406	Rooms Division Operations		1	0	0	0	1
0615070202	Six Sigma Black Belt		1	0	0	0	0
0652020901	Supply Chain Management		10	14	9	15	11
0630330106	Sustainable Design		3	0	1	3	4
0703010404	Water Control Technician		3	1	1	2	0
0511010307	Web Development Specialist		50	22	23	34	32
0451159906	Youth Development Professional		19	15	4	4	5
	Total Inactive College Credit Certificate Programs		0	0	0	0	4
	TOTAL COLLEGE CREDIT CERTIFICATES		1,194	1,118	1,115	1,126	1,070
	APPLIED TECHNOLOGY DIPLOMAS (ATD)		2020-21	2021-22	2022-23	2023-24	2024-25
0351090408	Emergency Medical Technician		0	0	0	0	0
0351150201	Maternal & Child Health		1	0	0	0	0
0351090418	Paramedic		8	4	11	0	0
	Total Inactive Applied Technology Diplomas		0	0	0	0	2
	TOTAL APPLIED TECHNOLOGY DIPLOMAS		9	4	11	0	2
	VOCATIONAL CERTIFICATES (PSAV)		2020-21	2021-22	2022-23	2023-24	2024-25
0743010200	Basic Correctional Officer		30	10	20	55	41
0743010205	Basic Crossover Law Enforcement Officer - Corrections		■	■	■	■	0
0743010702	Basic Crossover Corrections Officer - Law Enforcement		0	0	0	0	0
0743020303	Basic Firefighter I & II		58	21	43	54	31
0743010700	Basic Law Enforcement Officer		137	103	109	139	121
0743020300	Fire Fighter		0	0	0	0	0
0743020300	Basic Firefighting I		0	0	0	0	0
0743020300	Basic Firefighting II		0	0	0	0	0
0743020313	Fire Fighter/Emergency Medical		38	10	33	29	35
0351090418	Paramedic		18	11	11	0	0
0743039900	Public Safety Telecom		3	1	0	0	0
	Total Inactive Vocational Certificates		0	0	0	0	3
	TOTAL VOCATIONAL CERTIFICATES		284	156	216	277	228

*Program Did Not Exist

■Program deletion occurred. Enrollment now shown with other Inactive Technical Degree or Certificate Programs for next five years.
2015-16 Data displayed reflects PULSE BISource: Student Database AA-1A / BI Program Plan Subplan and PSAV
Revised: 12/19/2025

TABLE 7
ANNUAL GRADUATES BY PROGRAM

Active program specializations are listed under each CIP code. Only programs that were active in the most recent year are shown. The specializations are indented and italicized for readability.

GRAND TOTAL (ALL PROGRAMS)		2020-21	2021-22	2022-23	2023-24	2024-25
		7,217	6,257	5,835	5,632	5,732
Florida						
CIP Code	BACCALAUREATE DEGREES (BAS, BS)	2020-21	2021-22	2022-23	2023-24	2024-25
1102601011	Biology	29	24	31	18	27
1105202011	Business Administration	156	113	103	106	111
1101110034	Cybersecurity	*	25	60	107	101
1105105041	Dental Hygiene	53	57	42	32	28
1101399991	Educational Studies	114	98	84	80	71
5551399990	Educator Preparatory Institute	6	12	2	3	3
1101312021	Elementary Education	62	46	62	45	39
1101310011	Exceptional Student Education	10	9	8	12	3
1105122111	Health Services Administration	126	113	94	90	66
1104400001	Human Services			*	1	5
1105211011	International Business	■	■	■	■	0
1105202991	Management & Organizational Leadership	236	176	191	154	188
1101313165	Middle Grades General Science Education 5-9	1	1	0	0	0
1101313112	Middle Grades Mathematics Education 5-9	0	2	2	3	0
1105138012	Nursing	272	185	180	158	227
1105123070	Orthotics & Prosthetics	■	■	■	■	0
1102203022	Paralegal Studies	28	26	25	40	19
1101312101	Pre-Kindergarten/ Primary Education	0	0	0	0	0
1104404011	Public Policy & Administration	28	26	17	24	16
1104399991	Public Safety Administration	85	93	71	62	47
1101313111	Secondary Math Teacher Education	3	3	3	0	2
1101313221	Secondary Science Teacher Education	0	1	0	0	0
1100302991	Sustainability Management	26	25	29	18	11
1101110051	Technology Management	147	113	84	86	83
1100183011	Veterinary Technology	29	19	15	16	22
1105109081	Cardiopulmonary Science				*	2
	Total Inactive Baccalaureate Degree Programs	0	0	0	0	4
TOTAL BACCALAUREATE DEGREES		1,411	1,167	1,103	1,055	1,071
PROFESSIONAL CERTIFICATES		2020-21	2021-22	2022-23	2023-24	2024-25
5552203020	Paralegal Studies	23	16	15	16	14
5555202990	Project Management	63	53	33	33	11
5550183010	Veterinary Practice Management	15	10	5	10	16
	Total Inactive Professional Certificates	0	0	0	0	0
TOTAL PROFESSIONAL CERTIFICATES		101	79	53	59	41
1192401010	ASSOCIATE IN ARTS DEGREE (AA)	2020-21	2021-22	2022-23	2023-24	2024-25
		3,141	2,702	2,530	2,440	2,513
ASSOCIATE IN SCIENCE DEGREES (AS)		2020-21	2021-22	2022-23	2023-24	2024-25
1615000001	Applied Engineering Technology	11	14	13	7	5
1649010401	Aviation Maintenance Management	2	0	0	0	0
1615040102	Biomedical Engineering Technology	10	15	12	5	6
1341010100	Biotechnology Laboratory Technology	6	1	2	1	0
1604090100	Building Design and Construction Management	8	20	15	7	16
1552020102	Business Administration	45	48	51	31	33
1511010307	Computer Information Technology	33	26	17	18	23
1511020101	Computer Programming & Analysis	44	35	25	26	18
1743040600	Crime Scene Technology	26	24	23	24	8
1511100307	Cyber Security	60	55	47	52	59
1530700100	Data Science	0	2	7	10	17
1351060200	Dental Hygiene	33	32	22	21	18
1743040300	Digital Forensics and Computer Investigations	16	11	12	9	10
1611080103	Digital Media	24	32	21	19	15
1615130102	Drafting & Design Technology	1	■	0	0	0
1413121004	Early Childhood Education	28	27	17	16	8
1351090402	Emergency Medical Services	15	12	9	4	6
1703010401	Environmental Science Technology	12	7	9	5	4

TABLE 7 Continued
ANNUAL GRADUATES BY PROGRAM

Florida		2020-21	2021-22	2022-23	2023-24	2024-25
CIP Code	ASSOCIATE IN SCIENCE DEGREES (AS)					
1252080300	Financial Services - Banking	0	0	0	0	0
1743020112	Fire Science Technology	24	19	16	4	5
1312030100	Funeral Services	25	24	31	25	26
1351070700	Health Information Technology	37	26	17	27	24
0135070101	Health Sciences	23	25	20	18	14
1743030200	Homeland Security and Emergency Management	9	4	5	12	9
1252090101	Hospitality & Tourism Management	12	16	15	7	12
1351100405	Medical Laboratory Technology	0	0	0	0	0
1650091300	Music Industry/Recording Arts	29	19	31	27	22
1507030401	Network Administrator	■	■	■	0	0
1511100112	Networking Technologies	22	21	11	10	5
1351380100	Nursing, R.N.	307	311	320	262	279
1351230703	Orthotics & Prosthetics Technology	17	9	■	0	0
1722030200	Paralegal Studies	17	14	10	9	13
1650060500	Photographic Technology	4	■	0	0	0
1351080601	Physical Therapist Assistant	28	26	21	22	16
1652020501	Production Systems Management	2	0	0	0	0
1743010302	Public Safety	28	22	15	13	7
1351091100	Radiography	20	17	17	16	18
1351090800	Respiratory Care	18	17	19	16	15
1713100301	Sign Language Interpretation	■	0	0	0	0
1451159901	Social and Human Services	31	20	27	15	20
1351090901	Surgical Services	0	0	6	6	10
1511100507	Technology Management	1	■	0	0	0
1301830100	Veterinary Technology	92	55	52	53	82
1511100400	Web Development	15	16	13	7	11
	Total Inactive Associate in Science Degree Programs	0	0	0	0	10
	TOTAL ASSOCIATE IN SCIENCE DEGREES	1,135	1,022	948	804	834
	ADVANCED TECHNICAL CERTIFICATES (ATC)	2020-21	2021-22	2022-23	2023-24	2024-25
1451159967	Applied Mental Health ATC			*	19	39
0530710266	Business Analyst Specialist ATC				*	0
0743030267	Emergency Management ATC	*	0	0	2	0
0312030166	Funeral Arts ATC	19	14	21	12	13
0351070767	Health Data Management ATC	0	0	0	0	0
0341010166	Laboratory Specialist ATC	13	18	19	15	117
0652020966	Supply Chain Management ATC	1	4	3	5	4
0413121066	Training and Development ATC				*	3
	Total Inactive Advanced Technical Certificate Programs	0	0	0	0	1
	TOTAL ADVANCED TECHNICAL CERTIFICATES	33	36	43	53	176
	TECHNICAL CERTIFICATES (PSVC)	2020-21	2021-22	2022-23	2023-24	2024-25
0552030203	Accounting Technology Operations	37	25	13	22	13
0451150100	Addiction Studies	24	12	12	3	10
0511020113	Artificial Intelligence Responsible Use				*	1
0610020301	Audio Production & Engineering	0	7	27	39	26
0650060209	Audio Technology	10	2	■	0	0
0341010101	Biotechnology Laboratory Specialist			*	1	1
0552070306	Business Development and Entrepreneurship	0	3	15	8	8
0552070308	Business Entrepreneurship	15	12	11	6	9
0552070101	Business Administration	9	0	0	0	0
0552070101	Business Management	20	12	8	14	12
0552020104	Business Operations, Marketing	7	4	15	7	5
0511100114	CISCO Certified Network Associate	7	6	5	30	18
0511100116	Cloud Computing			*	4	4
0451150400	Community Health Worker	11	6	6	9	6
0511020200	Computer Programmer	65	55	48	45	40
0511020103	Computer Programming Specialist	26	13	15	49	8
0743010304	Computer Related Crime Investigations	24	19	15	6	10
0615130304	Computer-Aided Design & Drafting	11	21	5	10	9
0511100121	Computer Support Certificate	11	2	■	0	0
0743040600	Crime Scene Technology	32	37	32	18	17
0511100311	Cyber Security	157	179	287	240	264
0650010208	Digital Graphic Design	9	19	14	12	13
0610010507	Digital Media Multimedia Foundations	13	15	3	8	8
0609070219	Digital Media Production					1
0609070210	Digital Media Video Production	20	13	8	10	11

TABLE 7 Continued
ANNUAL GRADUATES BY PROGRAM

Florida						
CIP Code	TECHNICAL CERTIFICATES (PSVC)	2020-21	2021-22	2022-23	2023-24	2024-25
0650060501	Digital Photography	0	1	4	5	7
0615130101	Drafting and Architectural Design Technology	0	0	0	0	0
0615130101	<i>Building Construction Technology</i>	0	0	0	0	0
0615130101	<i>Drafting Technology</i>	0	0	0	0	0
0419070904	Early Child Development	7	6	10	3	1
0615030313	Electronics Aide	3	2	3	1	2
0743030201	Emergency Administration & Management	6	7	9	7	3
0615000007	Engineering Technology Support Specialist	19	17	9	9	10
0252090905	Event Planning Management	1	2	15	16	18
0715020102	Field Survey Technician			*	0	3
0743020111	Fire Officer Supervisor	28	22	16	9	3
0252090503	Food and Beverage Management	11	15	11	6	17
0252090507	Food and Beverage Management Specialist	16	16	13	12	19
0351070102	Health Care Services	30	25	18	28	22
0351070712	Healthcare Data Management	37	26	21	25	24
0511010313	Help Desk Support Specialist	43	42	41	45	29
0743011202	Homeland Security	5	4	7	7	3
0419070907	Infant Toddler Specialization	26	16	18	4	0
0615070203	Lean-Six Sigma Green Belt	4	5	0	5	2
0552020103	Management / Leadership	39	38	30	26	15
0615000013	Mechatronics	0	1	0	2	1
0351071404	Medical Coding and Revenue Management	57	55	44	34	39
0615040108	Medical Device Design and Manufacturing	0	0	0	2	0
0615040109	Medical Device Networking and Cybersecurity	0	5	1	4	10
0615040107	Medical Equipment Repair	10	15	11	8	11
0641010105	Medical Quality Systems	0	0	0	0	0
0511100112	Microsoft Certified IT Professional: Server Administrator	6	0	0	0	0
0511100122	Network Administration	13	24	18	22	17
0351090405	Paramedic	30	48	21	41	48
0419070908	Preschool Specialization	51	28	16	9	1
0615130211	Rapid Prototyping and Design	7	8	6	6	2
0552021501	Risk Management and Insurance Management	1	4	7	9	5
0252090402	Rooms Division Management	10	15	11	7	15
0252090406	Rooms Division Operations	24	19	10	13	15
0252090405	Rooms Division Specialist	26	17	12	19	14
0615070202	Six Sigma Black Belt	3	0	0	0	0
0652020901	Supply Chain and Logistics	3	9	4	6	5
0630330106	Sustainable Construction Technology	4	4	2	2	2
0703010404	Water Control Technician				4	1
0511010307	Web Development Specialist	35	34	23	22	22
0451159906	Youth Development Professional	5	11	6	1	2
	Total Inactive Technical Certificate Programs	6	4	6	0	7
	TOTAL TECHNICAL CERTIFICATES	1,074	1,007	962	960	882

	APPLIED TECHNOLOGY DIPLOMA (ATD)	2020-21	2021-22	2022-23	2023-24	2024-25
0351090408	Emergency Medical Technician	99	56	55	50	55
0351150201	Maternal & Child Health	0	0	0	■	0
	Total Inactive Applied Technology Diplomas	0	0	0	0	1
	TOTAL APPLIED TECHNOLOGY DIPLOMAS	99	56	55	50	55

	VOCATIONAL CERTIFICATES (PSAV)	2020-21	2021-22	2022-23	2023-24	2024-25
0743010200	Basic Corrections Officer	28	25	16	48	55
0743010702	Basic Crossover Corrections Officer - Law Enforcement	■	0	0	0	0
0743020304	Basic Fire Fighter I & II	47	52	68	56	37
0743010700	Basic Law Enforcement Officer	116	95	57	107	43
0743020313	Fire Fighter/Emergency Medical	25	13	■	0	25
0351090416	Paramedic	0	■	0	0	0
0743039900	Public Safety Telecommunication	7	3	■	0	0
	TOTAL VOCATIONAL CERTIFICATES	223	188	141	211	160

*Program did not exist.

■Program deletion occurred. Enrollment now shown with other Inactive Technical Degree or Certificate Programs for next five years.

2015-16 Data displayed represents PULSE BI.

Source: Student Database (AA-1A) / PULSE BI

Revised: 1/5/2026

TABLE 8
ANNUAL NON-CREDIT HEADCOUNT ENROLLMENT
UNDULICATED WITHIN NON-CREDIT COURSE CATEGORY

	<u>2020-21</u>	<u>2021-22</u>	<u>2022-23</u>	<u>2023-24</u>	<u>2024-25</u>
CONTINUING WORKFORCE	3,537 89.1%	2,770 89.0%	2,203 86.7%	2,746 88.2%	2,408 87.1%
POSTSECONDARY ADULT VOCATIONAL	275 6.9%	280 9.0%	250 9.8%	314 10.1%	296 10.7%
RECREATIONAL AND LEISURE	157 4.0%	64 2.1%	89 3.5%	55 1.8%	61 2.2%
TOTAL NON-CREDIT	3,969	3,114	2,542	3,115	2,765

Note: The numbers are unduplicated within the non-credit course categories: continuing workforce education, postsecondary adult vocational, and recreational and leisure.

Source: Student Database (AA-1C & EA-3 Reports, Rec&Leisure report)
Revised: 9/8/2025

TABLE 9
NATIONAL AND STATE LICENSURE EXAMINATION PASSING RATES

<u>Programs</u>	<u>2019-20</u>	<u>2020-21</u>	<u>2021-22</u>	<u>2022-23</u>	<u>2023-24</u>	<u>2024-25</u>
Corrections						
State Exam	100.0	96.0	85.7	100.0	100.0	100.0
Dental Hygiene						
National Exam	96.0	100.0	97.0	97.0	100.0	100.0
State Exam Written ^	100.0	100.0	100.0	100.0	100.0	100.0
State Exam Clinical ■	93.0	91.0	83.0	97.0	100.0	100.0
Education						
State Exam ‡	100.0	100.0	100.0	100.0	100.0	100.0
Emergency Medical Technician						
National Exam	84.0	80.0	81.0	87.0	91.0	95.2
Fire Academy						
State Exam	97.1	100.0	100.0	94.2	92.2	95.0
Funeral Services						
National Exam Arts	89.0	90.0	88.0	81.0	95.0	*
National Exam Science	76.0	81.0	73.0	75.0	68.0	*
Health Info Technology						
National Exam	59.0 ■	75.0 ■	79.0 ■	75.0	68.8	86.6
Law Enforcement						
State Exam	94.7	89.0	92.7	100.0	98.8	95.7
Nursing						
National Exam ■	95.9	92.3	81.1	82.8	94.1	90.0
Paramedic						
National Exam	90.0	92.0	88.0	86.0	67.0	98.0
Physical Therapist Assistant						
National Exam	100.0	96.3 ●	96.2 ●	100.0	100.0 ●	100.0
Radiography						
National Exam	94.7	100.0	100.0	100.0	88.2	94.4
Respiratory Care						
National Exam ▲	95.0	94.4	88.0	100.0	94.0	100.0
Veterinary Technology						
National Exam ▼	88.0	78.0	79.0 ◆	80.0	79.0 †	*

* Test results not available at this time.

■ Pass rate reflects the first attempt; actual results may be substantially higher.

^ Beginning in 2015-16, this exam is administered on a computer with proctor in a testing facility.

● Pass rate updated to reflect final total after all attempts.

▲ Pass rate is based on the number of program graduates, rather than test attempts.

▼ Standard for AVMA accreditation is 50%.

◆ The National Pass Rate for this same time period is 69%.

† The National Pass Rate for this same time period is 65%.

‡ Rate represents licensure exam pass rates of program graduates.

Department of Institutional Effectiveness

Source: SPC Program Offices / SPC Testing Center

Revised: 10/9/2025

TABLE 10
PLACEMENT AND FOLLOW-UP REPORT
PLACEMENT RATES: REPORTING YEAR 2022-23

Associate in Arts Programs								
Active Associate in Arts Programs	Pool	Employed	%	Military	Cont Educ	Field Empl	Placed	%
Associate in Arts, AA	2402	588	24%		1814		1814	76%
Total Active Associate in Arts Programs:	2402	588	24%		1814		1814	76%
TOTAL ASSOCIATE IN ARTS PROGRAMS:	2402	588	24%		1814		1814	76%

Associate in Science Programs								
Active Associate in Science Programs	Pool	Employed	%	Military	Cont Educ	Field Empl	Placed	%
Biomedical Engineering Technology, AS	14	12	86%	0	2	7	9	64%
Biotechnology Laboratory Technology, AS	2	2	100%	0	0	2	2	100%
Building Design and Construction Management, AS	12	12	100%	0	4	5	9	75%
Business Administration, AS	45	34	76%	0	12	33	45	100%
Computer Information Technology, AS	13	10	77%	0	3	9	12	92%
Computer Programming and Analysis, AS	17	12	71%	0	6	9	15	88%
Crime Scene Technology, AS	19	18	95%	0	5	4	9	47%
Criminal Justice Technology Public Safety Services, AS	13	13	100%	0	2	11	13	100%
Cybersecurity, AS	44	36	82%	0	10	34	44	100%
Data Science, AS	4	4	100%	0	0	4	4	100%
Dental Hygiene, AS	17	11	65%	4	2	9	15	88%
Digital Forensics and Computer Investigations, AS	6	5	83%	0	4	1	5	83%
Digital Media, AS	11	9	82%	0	2	8	10	91%
Emergency Administration and Management, AS	4	4	100%	0	0	4	4	100%
Emergency Medical Services, AS	9	8	89%	0	4	5	9	100%
Engineering Technology, AS	13	12	92%	0	2	10	12	92%
Environmental Science Technology, AS	9	6	67%	0	4	5	9	100%
Fire Science Technology, AS	19	19	100%	0	3	8	11	58%
Funeral Services, AS	23	23	100%	0	0	20	20	87%
Health Information Technology, AS	15	12	80%	0	3	11	14	93%
Health Sciences, AS	21	15	71%	0	9	8	17	81%
Hospitality and Tourism Management, AS	10	9	90%	0	1	8	9	90%
Music Industry/Recording Arts, AS	20	14	70%	0	8	8	16	80%
Networking Technologies, AS	8	8	100%	0	0	6	6	75%
Nursing (R.N.), AS	291	284	98%	0	23	249	272	93%
Paralegal Studies, AS	9	6	67%	0	3	6	9	100%
Physical Therapist Assistant, AS	27	26	96%	0	1	24	25	93%
Radiography, AS	17	16	94%	0	1	16	17	100%
Respiratory Care, AS	15	15	100%	0	0	15	15	100%

TABLE 10
PLACEMENT AND FOLLOW-UP REPORT
PLACEMENT RATES: REPORTING YEAR 2022-23

Associate in Science Programs								
Active Associate in Science Programs	Pool	Employed	%	Military	Cont Educ	Field Empl	Placed	%
Social and Human Services, AS	21	13	62%	0	10	10	20	95%
Veterinary Technology, AS	37	36	97%	0	2	33	35	95%
Web Development, AS	6	5	83%	0	2	4	6	100%
Total Active Associate in Science Programs:	791	709	90%	4	128	586	718	91%
Inactive Associate in Science Programs	Pool	Employed	%	Military	Cont Educ	Field Empl	Placed	%
Early Childhood Education, AS	13	11	85%	0	2	9	11	85%
Orthotics and Prosthetics Technology, AS	9	9	100%	0	1	4	5	56%
Total Inactive Associate in Science Programs:	22	20	91%	0	3	13	16	73%
TOTAL ASSOCIATE IN SCIENCE PROGRAMS:	813	729	90%	4	131	599	734	90%

Lower Division Certificate Programs								
Active Lower Division Certificate Programs	Pool	Employed	%	Military	Cont Educ	Field Empl	Placed	%
Accounting Technology Operations, Ctf.	10	8	80%	0	2	8	10	100%
Addiction Studies, Ctf.	10	10	100%	0	2	6	8	80%
Audio Production and Engineering, Ctf.	16	11	69%	0	11	5	16	100%
Basic Correctional Officer, PSAV	19	19	100%	0	0	18	18	95%
Basic Crossover Corrections to Law Enforcement Officer, PSAV	1	1	100%	0	0	1	1	100%
Basic Fire Fighter I and II, PSAV	46	44	96%	0	19	6	25	54%
Basic Law Enforcement Officer, PSAV	68	67	99%	0	1	65	66	97%
Business Development and Entrepreneurship, Ctf.	10	8	80%	0	2	8	10	100%
Business Entrepreneurship, Ctf.	11	7	64%	0	4	7	11	100%
Business Management, Ctf.	7	6	86%	0	1	6	7	100%
Business Operations - Marketing, Ctf.	9	6	67%	0	3	6	9	100%
Cisco Certified Network Associate, Ctf.	4	4	100%	0	0	4	4	100%
Community Health Worker, Ctf.	4	1	25%	0	3	1	4	100%
Computer Programmer, Ctf.	32	21	66%	0	15	14	29	91%
Computer Programming Specialist, Ctf.	8	5	63%	0	3	4	7	88%
Computer Related Crime Investigation, Ctf.	10	9	90%	0	5	3	8	80%
Computer-Aided Design and Drafting, Ctf.	4	4	100%	0	1	2	3	75%
Crime Scene Technology, Ctf.	22	19	86%	0	6	12	18	82%
Cybersecurity, Ctf.	234	167	71%	0	76	158	234	100%
Digital Graphic, Ctf.	9	7	78%	0	2	7	9	100%
Digital Media Video Production, Ctf.	8	4	50%	0	4	4	8	100%
Digital Media/Multimedia Foundations, Ctf.	2	2	100%	0	1	1	2	100%
Digital Photography, Ctf.	3	1	33%	0	2	0	2	67%
Early Child Development, Ctf.	4	4	100%	0	1	2	3	75%
Electronics Aide, Ctf.	3	2	67%	0	1	2	3	100%

TABLE 10
PLACEMENT AND FOLLOW-UP REPORT
PLACEMENT RATES: REPORTING YEAR 2022-23

Lower Division Certificate Programs								
Active Lower Division Certificate Programs	Pool	Employed	%	Military	Cont Educ	Field Empl	Placed	%
Emergency Administration and Management, Ctf.	7	7	100%	0	0	7	7	100%
Emergency Medical Technician, ATD	47	45	96%	0	19	17	36	77%
Engineering Technology Support, Ctf.	8	8	100%	0	2	6	8	100%
Event Planning Management, Ctf.	11	10	91%	0	1	9	10	91%
Fire Officer Supervisor, Ctf.	14	14	100%	0	4	5	9	64%
Food and Beverage Management Specialist, Ctf.	12	10	83%	0	4	8	12	100%
Food and Beverage Management, Ctf.	6	6	100%	0	0	5	5	83%
Funeral Arts, ATC	21	19	90%	0	4	15	19	90%
Health Care Services, Ctf.	22	16	73%	0	12	7	19	86%
Healthcare Data Management, Ctf.	16	14	88%	0	2	12	14	88%
Help Desk Support Specialist, Ctf.	36	28	78%	0	11	25	36	100%
Homeland Security, Ctf.	6	5	83%	0	3	2	5	83%
Infant and Toddler Specialization, Ctf.	18	15	83%	0	6	12	18	100%
Laboratory Specialist, ATC	20	18	90%	0	11	6	17	85%
Management/Leadership, Ctf.	31	25	81%	0	7	24	31	100%
Medical Coder, Ctf.	36	34	94%	0	2	26	28	78%
Medical Device Networking and Cybersecurity, Ctf.	1	1	100%	0	0	1	1	100%
Medical Equipment Repair, Ctf.	11	11	100%	0	2	7	9	82%
Network Administration, Ctf.	13	12	92%	0	3	10	13	100%
Paramedic, Ctf.	4	4	100%	0	1	3	4	100%
Preschool Specialization, Ctf.	16	14	88%	0	3	13	16	100%
Rapid Prototyping and Design, Ctf.	4	4	100%	0	2	2	4	100%
Risk Management and Insurance, Ctf.	6	5	83%	0	2	4	6	100%
Rooms Division Management, Ctf.	7	7	100%	0	0	6	6	86%
Rooms Division Operation, Ctf.	11	6	55%	0	7	4	11	100%
Rooms Division Specialist, Ctf.	12	7	58%	0	7	5	12	100%
Supply Chain and Logistics, Ctf.	4	2	50%	0	2	2	4	100%
Supply Chain Management, ATC	3	2	67%	0	1	2	3	100%
Sustainable Construction Technology, Ctf.	1	1	100%	0	0	1	1	100%
Water Quality Technician, Ctf.	3	3	100%	0	1	1	2	67%
Web Development Specialist, Ctf.	20	14	70%	0	10	7	17	85%
Youth Development Professional, Ctf.	8	5	63%	0	4	4	8	100%
Total Active Lower Division Certificate Programs:	989	809	82%	0	298	608	906	92%
Inactive Lower Division Certificate Programs	Pool	Employed	%	Military	Cont Educ	Field Empl	Placed	%
Paramedic, ATD	30	30	100%	0	10	18	28	93%

TABLE 10
PLACEMENT AND FOLLOW-UP REPORT
PLACEMENT RATES: REPORTING YEAR 2022-23

Lower Division Certificate Programs								
Inactive Lower Division Certificate Programs	Pool	Employed	%	Military	Cont Educ	Field Empl	Placed	%
Total Inactive Lower Division Certificate Programs:	30	30	100%	0	10	18	28	93%
TOTAL LOWER DIVISION CERTIFICATE PROGRAMS:	1019	839	82%	0	308	626	934	92%

Bachelor of Science/Bachelor of Applied Science Programs								
Active Bachelor of Science/Bachelor of Applied Science Programs	Pool	Employed	%	Military	Cont Educ	Field Empl	Placed	%
Biology, BS	17	16	94%	0	5	6	11	65%
Business Administration, BS	68	63	93%	0	5	63	68	100%
Cybersecurity, BAS	32	30	94%	0	3	29	32	100%
Dental Hygiene, BAS	33	28	85%	3	6	22	31	94%
Educational Studies and Community Leadership, BS	57	56	98%	0	2	45	47	82%
Elementary Education (K-6) with Infused ESOL and Reading Endorsements, BS	50	50	100%	0	0	49	49	98%
Exceptional Student Education (K-12) with Infused ESOL and Reading Endorsements, BS	8	8	100%	0	0	8	8	100%
Health Services Administration, BAS	75	74	99%	0	3	56	59	79%
Management and Organizational Leadership, BAS	139	132	95%	0	10	129	139	100%
Nursing, BS	152	152	100%	0	1	131	132	87%
Paralegal Studies, BAS	17	14	82%	0	3	12	15	88%
Public Policy and Administration, BS	18	16	89%	0	2	14	16	89%
Public Safety Administration, BAS	57	55	96%	0	4	43	47	82%
Secondary Education Mathematics (6-12), BS	3	3	100%	0	0	3	3	100%
Sustainability Management, BAS	20	20	100%	0	0	20	20	100%
Technology Development and Management, BAS	59	55	93%	0	4	54	58	98%
Veterinary Technology, BAS	14	14	100%	0	0	13	13	93%
Total Active Bachelor of Science/Bachelor of Applied Science Programs:	819	786	96%	3	48	697	748	91%
Inactive Bachelor of Science/Bachelor of Applied Science Programs	Pool	Employed	%	Military	Cont Educ	Field Empl	Placed	%
Middle Grades Mathematics Education (5-9), BS	2	2	100%	0	0	2	2	100%
Total Inactive Bachelor of Science/Bachelor of Applied Science Programs:	2	2	100%	0	0	2	2	100%
TOTAL BACHELOR OF SCIENCE/BACHELOR OF APPLIED SCIENCE PROGRAMS:	821	788	96%	3	48	699	750	91%

TABLE 10
PLACEMENT AND FOLLOW-UP REPORT
PLACEMENT RATES: REPORTING YEAR 2022-23

Upper Division Certificate Programs								
Active Upper Division Certificate Programs	Pool	Employed	%	Military	Cont Educ	Field Empl	Placed	%
Educator Preparation Institute (EPI) with Reading, Ctf.	1	1	100%	0	0	1	1	100%
Educator Preparation Institute (EPI), Ctf.	1	1	100%	0	0	1	1	100%
Paralegal Studies, Ctf.	12	12	100%	0	0	11	11	92%
Project Management, Ctf.	27	27	100%	0	0	26	26	96%
Veterinary Practice Management, Ctf.	4	4	100%	0	0	3	3	75%
Total Active Upper Division Certificate Programs:	45	45	100%	0	0	42	42	93%
TOTAL UPPER DIVISION CERTIFICATE PROGRAMS:	45	45	100%	0	0	42	42	93%

TOTAL 2022-23:	5,100	2,989	59%	7	2,301	1,966	4,274	84%
-----------------------	--------------	--------------	------------	----------	--------------	--------------	--------------	------------

NOTE: The total pool is based only on those matches where a training related decision was made.

Placement rates do not include those records without match data, or those that are undeterminable or unusable.

FETPIP no longer provides data for the Military category. Military placement data is retrieved only from the Recent Alumni Survey results.

AS = Associate in Science

ATD = Applied Technology Diplomas

ATC = Advanced Technical Certificates

Ctf. = Certificates

PSAV = Post-Secondary Adult Vocational Certificates

BS = Bachelor of Science

BAS = Bachelor of Applied Science

Pool = Total number of records with usable match data.

Employed = The total number of persons found employed, regardless of training relatedness.

Military = The total number of persons found in the Military Services.

Cont Educ = Total number of all found continuing education

(Division of Public Schools, Community College, and/or University).

Field Empl = Total number of those employed with jobs related to training.

Placed = Total number of individuals with employment related to training, continuing their education, or in military.

Institutional Effectiveness

Source: FETPIP Follow-Up Report and SPC Recent Alumni Survey

Created: 7/17/2025

TABLE 11
SITE ACREAGE AND ACQUISITION DATES

Site	Original Acquisition Date	Area in Acres	Type of Ownership
Allstate	June, 1988	22.43	SPC
Bay Pines	December, 1973	55.28	SPC
Clearwater	May, 1961	39.91	SPC
Downtown Center	June, 2004	1.37	SPC
EpiCenter	September, 2002	18.32	SPC
Fire Training Center	March, 2005	3.50	Pinellas Co. - SPC lease for 40 years
Health Education Center	April, 1980	15.87	SPC
Midtown	March, 2012	6.14	City of St. Pete - 50 year lease - Jamerson Center Keen & Midtown Community Center SPC Owned
Seminole	August, 1970	100.21	SPC
St. Petersburg/Gibbs	April, 1937	37.01	SPC
Tarpon Springs	October, 1972	82.33	SPC

Source: Facilities Planning & Institutional Services
Revised: 12/17/2025

TABLE 12
SITE GROSS SQUARE FOOTAGE AND REPLACEMENT COSTS

Site	Date First Occupied	Number of Buildings*	Portables or Sheds	Total Gross Square Feet	Current Replacement Cost (11/2020 Consortium)
Allstate	1991	11	7	171,966	34,558,368
Bay Pines	1973	1		12,569	2,589,214
Clearwater	1965	20	7	360,408	79,212,362
Downtown Center	2001	2		287,956	27,078,028
EpiCenter	2003	3		220,835	63,019,518
Fire Training Center	2005	4	1	21,172	3,112,455
Health Education	1981	13	7	253,811	46,604,328
Midtown Center	2003	3		76,352	15,225,048
St. Petersburg/Gibbs	1941	22	5	517,432	101,230,967
Seminole Site	1998	20	6	251,740	47,591,440
Tarpon Springs	1975	21	5	315,740	73,215,284
Palladium	2007	1		29,609	5,194,496
				2,519,590	\$488,491,776

*Includes buildings such as relocatable classrooms, storage facilities, etc., leased or owned by the College, and replacement costs include contents.

Of the three buildings, the Midtown Jamerson Center reflects contents only (leased facility), and the Fire Training Center is a 40-year lease.

Source: Facilities Planning & Institutional Services
Revised: 12/18/2025

TABLE 13
NUMBER OF COLLEGE EMPLOYEES BY GENDER

		2022-23		2023-24		2024-25	
		Male	Female	Male	Female	Male	Female
Management Occupations	Full-time	24	39	13	13	15	11
	Part-time	0	0	0	0	0	0
	Total	24	39	13	13	15	11
Business and Financial Operations	Full-time	7	41	7	45	10	43
	Part-time	9	13	8	11	10	13
	Total	16	54	15	56	20	56
Computer Engineering and Science	Full-time	68	44	67	50	68	51
	Part-time	1	0	1	0	0	0
	Total	69	44	68	50	68	51
Community Service, Legal, Arts and Media	Full-time	16	39	18	38	16	37
	Part-time	4	17	8	17	6	11
	Total	20	56	26	55	22	48
Instructional	<i>9 months</i>	106	150	109	138	113	139
	<i>10-12 months</i>	7	18	7	16	7	14
	Full-time	113	168	116	154	120	153
	Part-time	417	413	437	438	434	483
	Total	530	581	553	592	554	636
Archivists, Curators and Museum Technicians	Full-time	1	2	1	2	1	2
	Part-time	0	0	0	0	0	0
	Total	1	2	1	2	1	2
Librarians	Full-time	5	9	3	11	3	9
	Part-time	0	4	0	1	0	1
	Total	5	13	3	12	3	10
Library Technicians	Full-time	4	12	3	13	5	12
	Part-time	0	0	0	0	0	0
	Total	4	12	3	13	5	12
Student, Academic Affairs, and Other Ed. Services	Full-time	35	56	44	71	47	79
	Part-time	5	10	4	12	4	4
	Total	40	66	48	83	51	83
Healthcare Practitioners and Technical	Full-time	1	2	1	2	0	2
	Part-time	0	0	0	0	0	0
	Total	1	2	1	2	0	2
Service Occupations	Full-time	94	28	91	31	84	31
	Part-time	0	0	0	0	0	0
	Total	94	28	91	31	84	31
Sales and Related Occupations	Full-time	4	7	4	8	2	6
	Part-time	0	0	0	0	0	0
	Total	4	7	4	8	2	6
Office and Administrative Support Occupations	Full-time	40	211	40	212	38	220
	Part-time	64	102	66	106	61	93
	Total	104	313	106	318	99	313
Natural Resources, Construction and Maintenance Occupations	Full-time	45	2	43	3	41	2
	Part-time	0	0	0	0	0	0
	Total	45	2	43	3	41	2
Production, Transportation and Material	Full-time	11	5	11	5	10	8
	Part-time	1	0	0	0	0	0
	Total	12	5	11	5	10	8
Instructional Support	Full-time	30	32	31	41	32	42
	Part-time	0	0	0	0	0	0
	Total	30	32	31	41	32	42
Professional Support	Full-time	7	8	13	25	10	23
	Part-time	0	0	0	0	0	0
	Total	7	8	13	25	10	23
All Employees	Full-time	505	705	506	724	502	731
	Part-time	501	559	524	585	515	605
	Total	1,006	1,264	1,030	1,309	1,017	1,336

*Data not available for 9 and 10 month instructional employees.

Source: Annual Personnel Report
Revised: 1/5/2026

**TABLE 14
NUMBER OF COLLEGE EMPLOYEES BY ETHNICITY**

		2022-23				2023-24				2024-25			
		W	B	H	O	W	B	H	O	W	B	H	O
Management Occupations	Full-time	43	12	6	2	16	6	3	1	14	8	3	1
	Part-time	0	0	0	0	0	0	0	0	0	0	0	0
	Total	43	12	6	2	16	6	3	1	14	8	3	1
Business and Financial Operations	Full-time	35	7	5	1	36	8	6	2	36	7	8	2
	Part-time	22	0	0	0	19	0	0	0	21	2	0	0
	Total	57	7	5	1	55	8	6	2	57	9	8	2
Computer Engineering and Science	Full-time	84	6	9	13	86	6	12	13	87	7	12	13
	Part-time	1	0	0	0	1	0	0	0	0	0	0	0
	Total	85	6	9	13	87	6	12	13	87	7	12	13
Community Service, Legal, Arts and Media	Full-time	37	13	3	2	37	14	3	2	33	14	4	2
	Part-time	17	1	2	1	20	3	1	1	13	2	2	0
	Total	54	14	5	3	57	17	4	3	46	16	6	2
Instructional	9-10 Mos.	194	28	20	14	179	30	22	16	183	28	22	19
	11-12 Mos.	19	3	2	1	19	2	2	0	17	2	2	0
	Full-time	213	31	22	15	198	32	24	16	200	30	24	19
	Part-time	672	85	46	27	685	90	58	42	706	91	68	52
	Total	885	116	68	42	883	122	82	58	906	121	92	71
Archivists, Curators and Museum Technicians	Full-time	2	0	0	1	2	0	0	1	2	0	0	1
	Part-time	0	0	0	0	0	0	0	0	0	0	0	0
	Total	2	0	0	1	2	0	0	1	2	0	0	1
Librarians	Full-time	12	1	1	0	11	1	1	1	10	1	0	1
	Part-time	3	1	0	0	1	0	0	0	1	0	0	0
	Total	15	2	1	0	12	1	1	1	11	1	0	1
Library Technicians	Full-time	8	4	2	2	7	4	3	2	7	4	3	3
	Part-time	0	0	0	0	0	0	0	0	0	0	0	0
	Total	8	4	2	2	7	4	3	2	7	4	3	3
Student, Academic Affairs, and Other Ed. Services	Full-time	62	19	7	3	79	19	14	3	87	18	13	8
	Part-time	9	5	0	1	12	3	0	1	3	5	0	0
	Total	71	24	7	4	91	22	14	4	90	23	13	8
Healthcare Practitioners and Technical	Full-time	3	0	0	0	3	0	0	0	2	0	0	0
	Part-time	0	0	0	0	0	0	0	0	0	0	0	0
	Total	3	0	0	0	3	0	0	0	2	0	0	0
Service Occupations	Full-time	54	14	20	34	53	15	21	33	52	12	19	32
	Part-time	0	0	0	0	0	0	0	0	0	0	0	0
	Total	54	14	20	34	53	15	21	33	52	12	19	32
Sales and Related Occupations Support Occupations	Full-time	7	0	3	1	7	0	3	2	5	0	1	2
	Part-time	0	0	0	0	0	0	0	0	0	0	0	0
	Total	7	0	3	1	7	0	3	2	5	0	1	2
Office and Administrative Support Occupations	Full-time	150	57	28	16	155	59	22	16	163	53	24	18
	Part-time	118	19	20	9	124	18	19	11	111	15	21	7
	Total	268	76	48	25	279	77	41	27	274	68	45	25
Natural Resources, Construction and Maintenance Occupations	Full-time	35	6	4	2	33	6	5	2	28	7	6	2
	Part-time	0	0	0	0	0	0	0	0	0	0	0	0
	Total	35	6	4	2	33	6	5	2	28	7	6	2
Production, Transportation and Material	Full-time	12	3	0	1	14	2	0	0	14	1	1	2
	Part-time	0	1	0	0	0	0	0	0	0	0	0	0
	Total	12	4	0	1	14	2	0	0	14	1	1	2
Instructional Support	Full-time	44	11	4	3	48	12	7	5	45	14	9	6
	Part-time	0	0	0	0	0	0	0	0	0	0	0	0
	Total	44	11	4	3	48	12	7	5	45	14	9	6
Professional Support	Full-time	12	1	0	2	32	3	1	2	26	3	2	2
	Part-time	0	0	0	0	0	0	0	0	0	0	0	0
	Total	12	1	0	2	32	3	1	2	26	3	2	2
All Employees	Full-time	813	185	114	98	817	187	125	101	811	179	129	114
	Part-time	842	112	68	38	862	114	78	55	855	115	91	59
	Total	1,655	297	182	136	1,679	301	203	156	1,666	294	220	173

*Data not available for 9 and 10 month instructional employees.

Source: Annual Personnel Report
Revised: 1/5/2026

TABLE 15
NUMBER OF FULL-TIME COLLEGE EMPLOYEES
BY HIGHEST DEGREE EARNED

		2022-23	2023-24	2024-25
Management Occupations	Bachelor's	24	30	29
	Master's	37	46	45
	Master's plus 30	4	7	6
	Doctorate	35	50	48
	Other	5	4	5
Business and Financial Operations	Bachelor's	23	22	26
	Master's	13	13	12
	Master's plus 30	1	0	0
	Doctorate	1	1	0
	Other	16	17	18
Computer Engineering and Science	Bachelor's	30	33	34
	Master's	24	27	29
	Master's plus 30	2	2	1
	Doctorate	4	3	5
	Other	47	52	50
Community Service, Legal, Arts and Media	Bachelor's	20	21	20
	Master's	17	16	11
	Master's plus 30	0	0	1
	Doctorate	0	1	1
	Other	18	17	19
Instructional *	Bachelor's	4	2	4
	Master's	90	82	81
	Master's plus 30	65	50	51
	Doctorate	160	147	136
	Other	0	0	0
Archivists, Curators and Museum Technicians	Bachelor's	0	0	0
	Master's	0	1	1
	Master's plus 30	0	0	0
	Doctorate	0	0	0
	Other	2	2	2
Librarians	Bachelor's	1	1	1
	Master's	10	12	11
	Master's plus 30	2	2	2
	Doctorate	0	0	0
	Other	1	0	0
Library Technicians	Bachelor's	5	7	7
	Master's	1	2	2
	Master's plus 30	0	0	0
	Doctorate	0	0	0
	Other	9	8	8
Student, Academic Affairs, and Other Ed. Services	Bachelor's	36	40	41
	Master's	29	31	40
	Master's plus 30	5	7	9
	Doctorate	6	5	5
	Other	16	20	19
Healthcare Practitioners and Technical	Bachelor's	1	1	1
	Master's	1	1	0
	Master's plus 30	0	0	0
	Doctorate	0	0	0
	Other	2	2	2
Service Occupations	Bachelor's	4	6	6
	Master's	1	2	2
	Master's plus 30	0	0	0
	Doctorate	1	1	0
	Other	115	117	116
Sales and Related Occupations	Bachelor's	5	5	5
	Master's	3	4	4
	Master's plus 30	0	0	0
	Doctorate	0	0	0
	Other	4	3	3

TABLE 15 Continued
NUMBER OF FULL-TIME COLLEGE EMPLOYEES
BY HIGHEST DEGREE EARNED

		2022-23	2023-24	2024-25
Office and Administrative Support Occupations	Bachelor's	80	91	89
	Master's	28	37	39
	Master's plus 30	2	2	2
	Doctorate	1	2	2
	Other	133	132	122
Natural Resources, Construction and Maintenance Occupations	Bachelor's	3	3	1
	Master's	1	1	1
	Master's plus 30	0	0	0
	Doctorate	0	0	0
	Other	44	46	45
Production, Transportation and Material	Bachelor's	0	0	0
	Master's	0	0	0
	Master's plus 30	0	0	0
	Doctorate	0	0	0
	Other	17	15	18
Student Assistants	Bachelor's	2	0	0
	Master's	1	0	0
	Master's plus 30	0	0	0
	Doctorate	0	0	0
	Other	0	0	0
Instructional Support	Bachelor's	0	0	0
	Master's	0	0	0
	Master's plus 30	0	0	0
	Doctorate	0	0	0
	Other	0	0	0
Professional Support	Bachelor's	0	0	0
	Master's	0	0	0
	Master's plus 30	0	0	0
	Doctorate	0	0	0
	Other	0	0	0
All Employees	Bachelor's	238	262	264
	Master's	256	275	278
	Master's plus 30	81	70	72
	Doctorate	208	210	197
	Other	429	435	427
Total Employees		1,212	1,252	1,238

Source: PDB.RHDDEGRE
Revised: 1/6/2026

TABLE 16
DISTRIBUTION OF REVENUE FOR GENERAL CURRENT FUND - UNRESTRICTED

	2020-21	2021-22	2022-23	2023-24	2024-25
STUDENT FEES					
Tuition – A & P (Baccalaureate)	7,408,281	6,715,341	6,220,471	6,205,546	6,139,446
Tuition – A & P	19,363,782	17,854,551	17,606,482	18,171,762	18,267,055
Tuition – PSV	10,649,562	9,542,136	9,118,418	8,993,532	8,669,428
Tuition – PSAV	437,866	344,582	283,147	445,777	457,877
Tuition – Continuing Workforce Education	1,584,743	1,508,472	2,073,417	1,660,693	2,785,141
Tuition – College Preparatory	921,351	742,404	751,942	976,429	1,020,702
Tuition – Lifelong Learning	9,371	5,745	15,559	5,515	4,454
Tuition – Avocational/Recreational	0	0	0	0	0
Out-of-State Fees – A & P (Baccalaureate)	545,549	542,519	512,210	439,484	404,220
Out-of-State Fees – A & P	2,763,999	2,622,277	2,547,967	2,540,130	2,566,308
Out-of-State Fees – PSV	1,312,574	1,346,051	1,235,425	1,188,466	1,111,520
Out-of-State Fees – PSAV	36,054	57,905	58,408	35,551	3,439
Out-of-State Fees – College Preparatory	241,512	219,888	256,819	259,074	209,800
Laboratory Fees	2,875,809	2,739,333	2,434,954	2,839,360	2,815,256
Distance Learning Course User Fees	5,815,594	4,497,069	4,183,737	4,180,823	4,188,630
Application Fees	384,305	316,600	328,545	403,972	592,835
Other Student Fees	2,263,465	2,147,938	2,083,481	2,155,132	2,220,353
Total	56,613,817	51,202,812	49,710,983	50,501,247	51,456,463
	40.1%	34.3%	31.5%	31.3%	32.0%
LOCAL GOVERNMENT					
Grants & Contracts	2,413,348	2,564,139	2,950,044	3,065,717	3,436,040
	1.7%	1.7%	1.9%	1.9%	2.1%
STATE SUPPORT					
Florida College System Program Fund	60,398,312	66,032,070	71,617,032	76,965,923	77,492,481
Performance Based incentive Funding FCSPF	1,692,522	1,112,491	1,599,416	1,764,500	1,662,776
CCPF - Lottery	10,481,424	12,104,813	14,743,060	16,754,342	15,840,844
License Tag Fees	9,564	10,032	9,564	9,618	9,564
Other	999,252	1,366,841	1,613,227	1,691,487	1,529,623
Total	73,581,074	80,626,247	89,582,299	97,185,870	96,535,288
	52.2%	54.1%	56.8%	60.2%	60.1%
FEDERAL GOVERNMENT					
	894,561	1,263,823	789,957	708,698	629,252
	0.6%	0.8%	0.5%	0.4%	0.4%
PRIVATE GIFTS & GRANTS					
	484,380	1,373,869	574,064	752,370	613,755
	0.3%	0.9%	0.4%	0.5%	0.4%
SALES AND SERVICES					
Commissions	0	0	0	0	0
Other Sales and Services	558,542	1,092,500	1,183,288	1,099,015	980,681
Taxable Sales	2,592	3,454	19,965	0	0
Use of College Facilities	1,538,450	824,012	1,036,118	857,402	1,046,629
Total	2,099,583	1,919,966	2,239,372	1,956,417	2,027,310
	1.5%	1.3%	1.4%	1.2%	1.3%
MISCELLANEOUS					
Interest & Dividends	62,035	596,551	1,859,858	3,287,789	3,822,116
Other	18,547	-1,004,945	532,863	795,732	614,834
Non-Revenue Receipts	4,843,805	10,587,385	9,586,065	3,281,982	1,494,746
Total	4,924,387	10,178,991	11,978,786	7,365,503	5,931,696
	3.5%	6.8%	7.6%	4.6%	3.7%
TOTAL REVENUE	141,011,150	149,129,846	157,825,505	161,535,822	160,629,805

A & P – Advanced and Professional, the classification for freshman and sophomore courses applicable to the baccalaureate.

PSV – Postsecondary Vocational, the classification for college credit, career education courses.

PSAV – Postsecondary Adult Vocational, the classification for non-college credit job preparatory courses.

CCPF – Community College Program Fund, this was the primary source for operating funds for the Florida Community College System.

FCSPF – Florida College System Program Fund, this is the primary source for operating fund for the Florida College System.

Source: Annual Financial Report

Revised: 12/15/2025

TABLE 17
COLLEGE REVENUES, PERSONNEL EXPENSES,
CURRENT EXPENSES, AND CAPITAL OUTLAY

	2021-22	2022-23	2023-24	2024-25
TOTAL REVENUES	149,129,846	157,825,505	161,535,822	160,629,805
EXPENSES:				
PERSONNEL EXPENSES	96,965,344	103,105,994	119,144,493	114,383,388
AS % OF TOTAL	74.6%	72.6%	71.9%	74.4%
CURRENT EXPENSES	32,575,498	36,374,119	45,606,855	37,300,647
AS % OF TOTAL	25.1%	25.6%	27.5%	24.3%
CAPITAL OUTLAY	400,980	2,501,845	952,947	2,027,446
AS % OF TOTAL	0.3%	1.8%	0.6%	1.3%
TOTAL EXPENSES	129,941,821	141,981,958	165,704,296	153,711,481
FUND BALANCE INCREASE (DECREASE)	19,188,025	15,843,548	-4,168,474	6,918,324

Beginning 2015-16 Fund Balance includes GASB 68 Pension, which is a required entry but not paid by the College.

Source: Annual Financial Report
Revised: 12/15/2025

APPENDIX A
DEGREE AND CERTIFICATE PROGRAM INVENTORY

Acad Prog	Status	Acad Plan	Description	Plan Type	Community	Total Credits	Florida CIP Code	Federal CIP Code
AA	Active	ARCHIT-TR	Architecture, Pre-Bacc	Major	Engineering, Manufacturing, and Building Arts	60.00	1192401010	24.0101
AA	Active	ARTBFA-TR	Studio Art (BFA), Pre-Bacc	Major	Arts, Humanities and Design	60.00	1192401010	24.0101
AA	Active	BIO-TR	Biology, Pre-Bacc	Major	Science and Mathematics	70.00	1192401010	24.0101
AA	Active	BIOT-TR	Biotechnology, Pre-Bacc	Major	Science and Mathematics	60.00	1192401010	24.0101
AA	Active	BUS-TR	Business Administration	Major	Business	60.00	1192401010	24.0101
AA	Active	CHEMBS-TR	Chemistry, Pre-Bacc	Major	Science and Mathematics	60.00	1192401010	24.0101
AA	Active	COMM-TR	Communications, Pre-Bacc	Major	Communication	60.00	1192401010	24.0101
AA	Active	COMSC-TR	Computer & Information Science	Major	Technology	60.00	1192401010	24.0101
AA	Active	CRIM-TR	Criminology, Pre-Bacc	Major	Public Safety, Policy and Legal Studies	60.00	1192401010	24.0101
AA	Active	CYSEC-TR	Cybersecurity, Pre-Bacc	Major	Technology	60.00	1192401010	24.0101
AA	Active	DIGME-TR	Digital Media	Major	Arts, Humanities and Design	60.00	1192401010	24.0101
AA	Active	ECON-TR	Economics, Pre-Bacc	Major	Business	60.00	1192401010	24.0101
AA	Active	EDU-TR	Education, Pre-Bacc	Major	Education	61.00	1192401010	24.0101
AA	Active	ENGEDR-TR	Secondary Egls Ed w Rdg ESOL	Major	Education	60.00	1192401010	24.0101
AA	Active	ENGINE-TR	Engineering, Pre-Bacc	Major	Engineering, Manufacturing, and Building Arts	60.00	1192401010	24.0101
AA	Active	ENGLISH-TR	English, Pre-Bacc	Major	Communication	60.00	1192401010	24.0101
AA	Active	EVSC-TR	Environmental Science	Major	Science and Mathematics	60.00	1192401010	24.0101
AA	Active	FMACC-TR	Accounting, FAMU	Major	Business	60.00	1192401010	24.0101
AA	Active	FMBIO-TR	Biology, FAMU	Major	Science and Mathematics	61.00	1192401010	24.0101
AA	Active	FMCRIM-TR	Criminal Justice, FAMU	Major	Public Safety, Policy and Legal Studies	60.00	1192401010	24.0101
AA	Active	FMDPT-TR	Pre-Physical Therapy, FAMU	Major	Science and Mathematics	67.00	1192401010	24.0101
AA	Active	FMENGIN-TR	Engineering, FAMU	Major	Engineering, Manufacturing, and Building Arts	60.00	1192401010	24.0101
AA	Active	FMJOU-TR	Journalism, FAMU	Major	Communication	60.00	1192401010	24.0101
AA	Active	FSPACC-TR	Accounting, USF St. Pete	Major	Business	60.00	1192401010	24.0101
AA	Active	FSPANTH-TR	Anthropology, USF St. Pete	Major	Social/Behavioral Sciences and Human Services	60.00	1192401010	24.0101
AA	Active	FSPBIO-TR	Biology, USF St. Pete	Major	Science and Mathematics	61.00	1192401010	24.0101
AA	Active	FSPCOMM-TR	Digital Comm,USF St. Pete	Major	Communication	60.00	1192401010	24.0101
AA	Active	FSPCRIM-TR	Criminology, USF St. Pete	Major	Public Safety, Policy and Legal Studies	60.00	1192401010	24.0101
AA	Active	FSPFIN-TR	Finance, USF St. Pete	Major	Business	60.00	1192401010	24.0101
AA	Active	FSPHIS-TR	History, USF St. Pete	Major	Social/Behavioral Sciences and Human Services	60.00	1192401010	24.0101
AA	Active	FSPIDS-TR	Interdisciplinary Social Scien	Major	Social/Behavioral Sciences and Human Services	60.00	1192401010	24.0101
AA	Active	FSPISM-TR	Bus Analyt & Inf, USF St. Pete	Major	Technology	60.00	1192401010	24.0101
AA	Active	FSPPLIT-TR	English Literary, USF St. Pete	Major	Communication	60.00	1192401010	24.0101
AA	Active	FSPMABI-TR	Marine Biology, USF St. Pete	Major	Science and Mathematics	60.00	1192401010	24.0101
AA	Active	FSPMAR-TR	Marketing, USF St. Pete	Major	Business	60.00	1192401010	24.0101
AA	Active	FSPMGT-TR	Management, USF St. Pete	Major	Business	60.00	1192401010	24.0101
AA	Active	FSPPOL-TR	Political Sci, USF St. Pete	Major	Social/Behavioral Sciences and Human Services	60.00	1192401010	24.0101
AA	Active	FSPPSY-TR	Psychology, USF St. Pete	Major	Social/Behavioral Sciences and Human Services	60.00	1192401010	24.0101
AA	Active	FSPWRT-TR	Creative Writing, USF St. Pete	Major	Communication	60.00	1192401010	24.0101
AA	Active	FTACC-TR	Accounting, USF Tampa	Major	Business	60.00	1192401010	24.0101
AA	Active	FTANTH-TR	Anthropology, USF Tampa	Major	Social/Behavioral Sciences and Human Services	60.00	1192401010	24.0101
AA	Active	FTARBA-TR	Studio Art (BA), USF Tampa	Major	Arts, Humanities and Design	60.00	1192401010	24.0101
AA	Active	FTARBFA-TR	Studio Art (BFA), USF Tampa	Major	Arts, Humanities and Design	60.00	1192401010	24.0101
AA	Active	FTARHIS-TR	Art History, USF Tampa	Major	Arts, Humanities and Design	60.00	1192401010	24.0101
AA	Active	FTBIO-TR	Biology, USF Tampa	Major	Science and Mathematics	61.00	1192401010	24.0101
AA	Active	FTBIOMD-TR	Biomedical Science, USF Tampa	Major	Science and Mathematics	64.00	1192401010	24.0101
AA	Active	FTBSW-TR	Social Work USF Tampa	Major	Social/Behavioral Sciences and Human Services	60.00	1192401010	24.0101
AA	Active	FTCMBIO-TR	Molecular Biology, USF Tampa	Major	Science and Mathematics	64.00	1192401010	24.0101
AA	Active	FTCOEN-TR	Computer Engineering,USF Tampa	Major	Technology	60.00	1192401010	24.0101
AA	Active	FTCOMM-TR	Communications, USF Tampa	Major	Communication	60.00	1192401010	24.0101
AA	Active	FTCOSC-TR	Computer Science, USF Tampa	Major	Technology	60.00	1192401010	24.0101
AA	Active	FTCRIM-TR	Criminology, USF Tampa	Major	Public Safety, Policy and Legal Studies	60.00	1192401010	24.0101
AA	Active	FTCYSEC-TR	Cybersecurity, USF Tampa	Major	Technology	60.00	1192401010	24.0101
AA	Active	FTFIN-TR	Finance, USF Tampa	Major	Business	60.00	1192401010	24.0101
AA	Active	FTFRN-TR	World Lang.-French, USF Tampa	Major	Communication	60.00	1192401010	24.0101
AA	Active	FTGEOL-TR	Geology, USF Tampa	Major	Science and Mathematics	60.00	1192401010	24.0101
AA	Active	FTHIS-TR	History, USF Tampa	Major	Social/Behavioral Sciences and Human Services	60.00	1192401010	24.0101
AA	Active	FTIDS-TR	Interdisciplinary Social Scien	Major	Social/Behavioral Sciences and Human Services	60.00	1192401010	24.0101

APPENDIX A Continued
DEGREE AND CERTIFICATE PROGRAM INVENTORY

Acad Prog	Status	Acad Plan	Description	Plan Type	Community	Total Credits	Florida CIP Code	Federal CIP Code
AA	Active	FTINFO-TR	Information Tech, USF Tampa	Major	Technology	60.00	1192401010	24.0101
AA	Active	FTISM-TR	Bus Analyt & Info, USF Tampa	Major	Technology	60.00	1192401010	24.0101
AA	Active	FTLIT-TR	English Literary, USF Tampa	Major	Communication	60.00	1192401010	24.0101
AA	Active	FTMABIO-TR	Marine Biology, USF Tampa	Major	Science and Mathematics	64.00	1192401010	24.0101
AA	Active	FTMAR-TR	Marketing, USF Tampa	Major	Business	60.00	1192401010	24.0101
AA	Active	FTMGT-TR	Management, USF Tampa	Major	Business	60.00	1192401010	24.0101
AA	Active	FTPHBS-TR	Public Health BS, USF Tampa	Major	Health Sciences and Veterinary Technology	60.00	1192401010	24.0101
AA	Active	FTPOLS-TR	Political Sci, USF Tampa	Major	Social/Behavioral Sciences and Human Services	60.00	1192401010	24.0101
AA	Active	FTPSY-TR	Psychology, USF Tampa	Major	Social/Behavioral Sciences and Human Services	60.00	1192401010	24.0101
AA	Active	FTSCM-TR	Supply Chain Mgt., USF Tampa	Major	Business	60.00	1192401010	24.0101
AA	Active	FTSPN-TR	World Lang.-Spanish, USF Tampa	Major	Communication	60.00	1192401010	24.0101
AA	Active	FTWRT-TR	English- Writing, USF Tampa	Major	Communication	60.00	1192401010	24.0101
AA	Active	GEN-AA	General, Pre-Bacc	Major	Non-Degree Seeking or No Community	60.00	1192401010	24.0101
AA	Active	HSA-TR	Health Sciences, Pre-Bacc	Major	Health Sciences and Veterinary Technology	60.00	1192401010	24.0101
AA	Active	HUMSVC-TR	Human Services	Major	Social/Behavioral Sciences and Human Services	60.00	1192401010	24.0101
AA	Active	IDS-TR	Educational Studies Interdisci	Major	Education	60.00	1192401010	24.0101
AA	Active	LEGAL-TR	Paralegal Studies	Major	Public Safety, Policy and Legal Studies	60.00	1192401010	24.0101
AA	Active	MATH-TR	Mathematics, Pre-Bacc	Major	Science and Mathematics	60.00	1192401010	24.0101
AA	Active	MGSED-TR	Middle Grades Gen Science Edu	Major	Education	60.00	1192401010	24.0101
AA	Active	MGTORG-TR	Mgmt & Orgntl Leadership	Major	Business	60.00	1192401010	24.0101
AA	Active	MTSED-TR	Secondary Ed. Mathematics	Major	Education	60.00	1192401010	24.0101
AA	Active	MUSIC-TR	Music, Pre-Bacc	Major	Arts, Humanities and Design	60.00	1192401010	24.0101
AA	Active	MUSICED-TR	Music Education, Pre-Bacc	Major	Arts, Humanities and Design	60.00	1192401010	24.0101
AA	Active	NCFBIO-TR	Biology, NCF	Major	Science and Mathematics	60.00	1192401010	24.0101
AA	Active	NCFCHM-TR	Chemistry, NCF	Major	Science and Mathematics	60.00	1192401010	24.0101
AA	Active	NCFECO-TR	Economics, NCF	Major	Social/Behavioral Sciences and Human Services	60.00	1192401010	24.0101
AA	Active	NCFMABI-TR	Marine Biology, NCF	Major	Science and Mathematics	60.00	1192401010	24.0101
AA	Active	NCFPSY-TR	Psychology, NCF	Major	Social/Behavioral Sciences and Human Services	60.00	1192401010	24.0101
AA	Active	NURSING-TR	Nursing, Pre-Bacc	Major	Health Sciences and Veterinary Technology	63.00	1192401010	24.0101
AA	Active	PHARM-TR	Pharmacy, Pre-Bacc	Major	Science and Mathematics	86.00	1192401010	24.0101
AA	Active	PKPED-TR	Prek/Primary Ed.w ESOL and Rdg	Major	Education	60.00	1192401010	24.0101
AA	Active	PPA-TR	Public Policy and Administratn	Major	Public Safety, Policy and Legal Studies	60.00	1192401010	24.0101
AA	Active	PRESCHL-TR	Educational Studies Early Chil	Major	Education	60.00	1192401010	24.0101
AA	Active	PSA-TR	Public Safety Administration	Major	Public Safety, Policy and Legal Studies	60.00	1192401010	24.0101
AA	Active	PSYCH-TR	Psychology, Pre-Bacc	Major	Social/Behavioral Sciences and Human Services	60.00	1192401010	24.0101
AA	Active	SLIP-TR	American Sign Language Studies	Major	Communication	60.00	1192401010	24.0101
AA	Active	SOCIAL-TR	Social Work, Pre-Bacc	Major	Social/Behavioral Sciences and Human Services	60.00	1192401010	24.0101
AA	Active	SPC-TR	Speech Comm and Rhetoric	Major	Communication	60.00	1192401010	24.0101
AA	Active	SUSMGMT-TR	Sustainability Management	Major	Business	60.00	1192401010	24.0101
AA	Active	THEATRE-TR	Theatre, Pre-Bacc	Major	Arts, Humanities and Design	60.00	1192401010	24.0101
AA	Active	TMGT-TR	Technology Management	Major	Technology	60.00	1192401010	24.0101
AA	Active	TRNDEV-TR	Ed. Studies Training and Dev.	Major	Education	60.00	1192401010	24.0101
AS	Active	ARCH-AS	Bldg Design and Constr Mgmt	Major	Engineering, Manufacturing, and Building Arts	66.00	1604090100	04.0901
AS	Active	BIOT-AS	Biotechnology Laboratory Tech	Major	Science and Mathematics	61.00	1341010100	41.0101
AS	Active	BMET-AS	Biomedical Engineering Tech	Major	Engineering, Manufacturing, and Building Arts	60.00	1615040102	15.0401
AS	Active	BUS-AS	Business Administration	Major	Business	60.00	1552020102	52.0201
AS	Active	CIT-AS	Computer Information Technolog	Major	Technology	60.00	1511010307	11.0103
AS	Active	CJPSS-AS	Public Safety	Major	Public Safety, Policy and Legal Studies	60.00	1743010302	43.0103
AS	Active	CLOUD-AS	Cloud Computing Technology	Major	Technology	60.00	1511090200	11.0902
AS	Active	COMPNET-AS	Networking Technologies	Major	Technology	60.00	1511100112	11.1001
AS	Active	CWPA-AS	Computer Program and Analysis	Major	Technology	60.00	1511020101	11.0201
AS	Active	DATSCI-AS	Data Science	Major	Technology	60.00	1530700100	11.0101
AS	Active	DENHY-AS	Dental Hygiene	Major	Health Sciences and Veterinary Technology	88.00	1351060200	51.0602
AS	Active	DIG-AS	Digital Media	Major	Arts, Humanities and Design	60.00	1611080103	11.0801
AS	Active	EAM-AS	Homeland Security and Emgy Mgt	Major	Public Safety, Policy and Legal Studies	60.00	1743030200	43.0302
AS	Active	EMS-AS	Emergency Medical Services	Major	Health Sciences and Veterinary Technology	73.00	1351090402	51.0904
AS	Active	ENG-AS	Applied Engineering Tech. AS	Major	Engineering, Manufacturing, and Building Arts	60.00	1615000001	15.0000
AS	Active	FUNSE-AS	Funeral Services	Major	Health Sciences and Veterinary Technology	72.00	1312030100	12.0301
AS	Active	HIT-AS	Health Information Technology	Major	Health Sciences and Veterinary Technology	70.00	1351070700	51.0707
AS	Active	HSA-AS	Health Sciences	Major	Health Sciences and Veterinary Technology	60.00	1351070101	51.0701

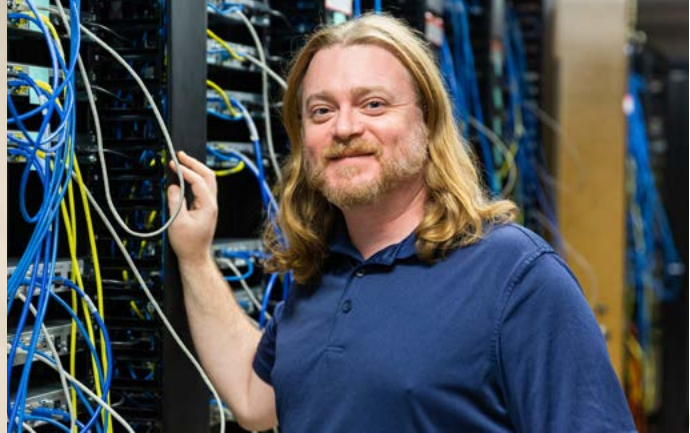
APPENDIX A Continued
DEGREE AND CERTIFICATE PROGRAM INVENTORY

Acad Prog	Status	Acad Plan	Description	Plan Type	Community	Total Credits	Florida CIP Code	Federal CIP Code
AS	Active	HUS-AS	Social and Human Services	Major	Social/Behavioral Sciences and Human Services	60.00	1451159901	44.0000
AS	Active	ITSC-AS	Cybersecurity	Major	Technology	60.00	1511100307	11.1003
AS	Active	LEGAL-AS	Paralegal Studies	Major	Public Safety, Policy and Legal Studies	64.00	1722030200	22.0302
AS	Active	MIRAS-AS	Music Industry/Recording Arts	Major	Arts, Humanities and Design	64.00	1650091300	50.0913
AS	Active	NURSE-AS	Nursing	Major	Health Sciences and Veterinary Technology	72.00	1351380100	51.3801
AS	Active	PTA-AS	Physical Therapist Assistant	Major	Health Sciences and Veterinary Technology	74.00	1351080601	51.0806
AS	Active	RAD-AS	Radiography	Major	Health Sciences and Veterinary Technology	77.00	1351091100	51.0911
AS	Active	RESC-AS	Respiratory Care	Major	Health Sciences and Veterinary Technology	76.00	1351090800	51.0908
AS	Active	SURG-AS	Surgical Services	Major	Health Sciences and Veterinary Technology	64.00	1351090901	51.0909
AS	Active	VETTC-AS	Veterinary Technology	Major	Health Sciences and Veterinary Technology	73.00	1301830100	01.8301
AS	Active	WEBSDM-AS	Web Development	Major	Technology	60.00	1511100400	11.1004
ATDN	Active	EMT-ATD	Emergency Medical Technician	Specialization	Health Sciences and Veterinary Technology	12.00	0351090408	51.0904
BAS	Active	CYSEC-BAS	Cybersecurity	Major	Technology	120.00	1101110034	11.1003
BAS	Active	DENH-BAS	Dental Hygiene	Major	Health Sciences and Veterinary Technology	120.00	1105105041	51.0504
BAS	Active	DIGME-BAS	Digital Media	Major	Arts, Humanities and Design	120.00	1101003041	10.0304
BAS	Active	HSA-BAS	Health Services Administration	Major	Health Sciences and Veterinary Technology	120.00	1105122111	51.2211
BAS	Active	LEGAL-BAS	Paralegal Studies BAS	Major	Public Safety, Policy and Legal Studies	120.00	1102203022	22.0302
BAS	Active	MGTORG-BAS	Mgmt & Orgntl Leadership	Major	Business	120.00	1105202991	52.0299
BAS	Active	PSA-BAS	Public Safety Admin-BAS	Major	Public Safety, Policy and Legal Studies	120.00	1104399991	43.9999
BAS	Active	SUSMGT-BAS	Sustainability Management BAS	Major	Business	120.00	1100302991	03.0299
BAS	Active	TMGT-BAS	Tech Development & Management	Major	Technology	120.00	1101110051	11.1005
BAS	Active	VETTC-BAS	Veterinary Technology	Major	Health Sciences and Veterinary Technology	120.00	1100183011	01.8301
BS	Active	BIOLOGY-BS	Biology-BS	Major	Science and Mathematics	120.00	1102601011	26.0101
BS	Active	BUS-BS	Business Administration - BS	Major	Business	120.00	1105202011	52.0201
BS	Active	CARD-BS	Cardiopulmonary Science-BS	Major	Health Sciences and Veterinary Technology	121.00	1105109081	51.0908
BS	Active	EDST-BS	Ed Studies & Community Leader	Major	Education	120.00	1101399991	13.9999
BS	Active	ELEDR-BS	Elem Ed with Reading Endorseme	Major	Education	120.00	1101312021	13.1202
BS	Active	ELEDRA-BS	Elem. Ed. w Rdg. Endo Apprent	Major	Education	120.00	1101312021	13.1202
BS	Active	ENGEDR-BS	Secondary Egls Ed w Rdg ESOL	Major	Education	120.00	1101313051	13.1305
BS	Active	ENGEDRA-BS	Scdry Egls Ed w Rdg ESOL Appre	Major	Education	120.00	1101313051	13.1305
BS	Active	ESEDR-BS	Exceptional Ed with Reading	Major	Education	125.00	1101310011	13.1001
BS	Active	ESEDRA-BS	Exceptional Ed w Reading Appre	Major	Education	125.00	1101310011	13.1001
BS	Active	HUMSVC-BS	Human Services-BS	Major	Social/Behavioral Sciences and Human Services	120.00	1104400001	44.0000
BS	Active	MTSED-BS	Secondary Math Education	Major	Education	123.00	1101313111	13.1311
BS	Active	NURS-BS	Nursing	Major	Health Sciences and Veterinary Technology	121.00	1105138012	51.3801
BS	Active	PKPED-BS	Pre-K/Primary Education	Major	Education	120.00	1101312101	13.1210
BS	Active	PKPEDA-BS	Pre-K/Primary Education Appren	Major	Education	120.00	1101312101	13.1210
BS	Active	PPA-BS	Public Policy and Administratn	Major	Public Safety, Policy and Legal Studies	120.00	1104404011	44.0401
CERTF	Active	ACTAP-CT	Accounting Technology Oprtns	Specialization	Business	18.00	552030203	52.0302
CERTF	Active	ADS-CT	Addiction Studies Certificate	Specialization	Social/Behavioral Sciences and Human Services	24.00	451150100	51.1501
CERTF	Active	AIRUP-CT	AI Responsible Use Practitione	Specialization	Technology	18.00	0511010200	11.0102
CERTF	Active	AMH-ATC	Applied Mental Health ATC	Specialization	Social/Behavioral Sciences and Human Services	18.00	1451159967	51.1599
CERTF	Active	ANLST-ATC	Business Analyst ATC	Specialization	Business	24.00	0530710266	30.7102
CERTF	Active	AUDIOPE-CT	Audio Prod. & Engineering Cert	Specialization	Arts, Humanities and Design	24.00	610020301	50.0913
CERTF	Active	BCNST-CT	Sustainable Construction Tech	Specialization	Engineering, Manufacturing, and Building Arts	19.00	0630330106	15.1301
CERTF	Active	BIOT-CT	Biotechnology Laboratory Speci	Specialization	Science and Mathematics	32.00	0341010101	41.0101
CERTF	Active	BMET-CT	Medical Equipment Repair	Specialization	Engineering, Manufacturing, and Building Arts	23.00	0615040107	15.0401
CERTF	Active	BUSADM-CT	Business Management CT	Specialization	Business	24.00	0552070101	52.0701
CERTF	Active	BUSENTR-CT	Business Development and Entre	Specialization	Business	24.00	0552070306	52.0701
CERTF	Active	CAD-CT	Computer-Aided Design and Draf	Specialization	Engineering, Manufacturing, and Building Arts	24.00	0615130304	15.1303
CERTF	Active	CCNA-CT	Cisco Certified Network Assoc	Specialization	Technology	21.00	0511100114	11.1001
CERTF	Active	CHDEV-CT	Early Child Development	Specialization	Education	36.00	0419070904	19.0709
CERTF	Active	CHW-CT	Community Health Worker	Specialization	Social/Behavioral Sciences and Human Services	18.00	0451150400	51.1504
CERTF	Active	CLOUD-CT	Cloud Computing Certificate	Specialization	Technology	24.00	0511100116	11.1001
CERTF	Active	CMPRG-CT	Computer Programmer	Specialization	Technology	33.00	0511020200	11.0202
CERTF	Active	COENTR-ATC	Corp. Entrepreneurship Innovat	Specialization	Business	18.00	0552070367	52.0703
CERTF	Active	CPS-CT	Computer Programming Spclst	Specialization	Technology	18.00	0511020103	11.0201
CERTF	Active	CRCI-CT	Computer Related Crime Invest	Specialization	Public Safety, Policy and Legal Studies	24.00	0743010304	43.0103

APPENDIX A Continued
DEGREE AND CERTIFICATE PROGRAM INVENTORY

Acad Prog	Status	Acad Plan	Description	Plan Type	Community	Total Credits	Florida CIP Code	Federal CIP Code
CERTF	Active	CST-CT	Crime Scene Technology	Specialization	Public Safety, Policy and Legal Studies	27.00	0743040600	43.0406
CERTF	Active	EAM-ATC	Emergency Management ATC	Specialization	Public Safety, Policy and Legal Studies	17.00	0743030267	43.0302
CERTF	Active	EAM-CT	Emergency Administration & Mgt	Specialization	Public Safety, Policy and Legal Studies	24.00	0743030201	43.0302
CERTF	Active	ENGTECH-CT	Engineering Techn Support CT	Specialization	Engineering, Manufacturing, and Building Arts	18.00	0615000007	15.0000
CERTF	Active	EPI-CT	Educator Preparation Institute	Specialization	Education	27.00	5551399990	13.9999
CERTF	Active	EPIR-CT	Educator Prep. Institute w Rdg	Specialization	Education	34.00	5551399990	13.9999
CERTF	Active	EVENT-CT	Event Planning Management	Specialization	Business	24.00	0252090905	52.0901
CERTF	Active	FBM-CT	Food and Beverage Mgt	Specialization	Business	30.00	0252090503	52.0905
CERTF	Active	FSTECH-CT	Field Survey Technician Cert	Specialization	Engineering, Manufacturing, and Building Arts	18.00	0715020102	15.0201
CERTF	Active	FUNAT-ATC	Funeral Arts ATC	Specialization	Health Sciences and Veterinary Technology	28.00	0312030166	12.0301
CERTF	Active	GRENTR-CT	Green Innovts and Social Entrp	Specialization	Business	18.00	0552070303	52.0703
CERTF	Active	HCINF-CT	Healthcare Data Management	Specialization	Health Sciences and Veterinary Technology	24.00	0351070712	51.0707
CERTF	Active	HDSK-CT	Help Desk Support Specialist	Specialization	Technology	18.00	0511010313	11.0202
CERTF	Active	HLS-CT	Homeland Security Certificate	Specialization	Public Safety, Policy and Legal Studies	24.00	0743011202	43.0302
CERTF	Active	HSA-CT	Health Care Services	Specialization	Health Sciences and Veterinary Technology	27.00	0351070102	51.0701
CERTF	Active	ITSC-CT	Cybersecurity Certificate	Specialization	Technology	18.00	0511100311	11.1003
CERTF	Active	LAB-ATC	Laboratory Specialist ATC	Specialization	Science and Mathematics	44.00	341010166	12.0301
CERTF	Active	LEGAL-CT	Paralegal Studies UD	Specialization	Public Safety, Policy and Legal Studies	24.00	5552203020	22.0302
CERTF	Active	LINXSA-CT	Network Administration	Specialization	Technology	21.00	0511100122	11.1001
CERTF	Active	MDDM-CT	Medical Device Design & Manufa	Specialization	Engineering, Manufacturing, and Building Arts	27.00	0615040108	15.0401
CERTF	Active	MDNC-CT	Medical Device Ntwrkng & Cyber	Specialization	Engineering, Manufacturing, and Building Arts	23.00	0615040109	15.0401
CERTF	Active	MECH-CT	Mechatronics	Specialization	Engineering, Manufacturing, and Building Arts	30.00	0615000013	15.0000
CERTF	Active	MEDCD-CT	Med Coding & Revenue Mgt.Cert.	Specialization	Health Sciences and Veterinary Technology	37.00	0351071404	51.0714
CERTF	Active	MKT-CT	Business Operations, Marketing	Specialization	Business	18.00	552020104	52.0201
CERTF	Active	PGY-CT	Digital Photography	Specialization	Arts, Humanities and Design	22.00	0650060501	50.0605
CERTF	Active	PMED-CT	Paramedic	Specialization	Health Sciences and Veterinary Technology	42.00	0351090405	51.0904
CERTF	Active	PRJMGT-CT	Project Management Certificate	Specialization	Business	18.00	5555202990	52.0299
CERTF	Active	RDM-CT	Rooms Division Management	Specialization	Business	30.00	0252090402	52.0904
CERTF	Active	RDO-CT	Rooms Division Operations	Specialization	Business	19.00	0252090406	52.0904
CERTF	Active	RISKMG-CT	Risk Management and Insurance	Specialization	Business	24.00	0552021501	52.0201
CERTF	Active	SCM-CT	Supply Chain and Logistics	Specialization	Business	18.00	652020901	52.0209
CERTF	Active	SCMG-ATC	Supply Chain Management ATC	Specialization	Business	18.00	0652020966	52.0209
CERTF	Active	TRNDEV-ATC	Training and Development ATC	Specialization	Education	18.00	0413121066	13.1201
CERTF	Active	VETTC-CT	Veterinary Practice Mgmt UD	Specialization	Health Sciences and Veterinary Technology	20.00	5550183010	01.8301
CERTF	Active	WEBDS-CT	Web Development Specialist	Specialization	Technology	18.00	0511010307	11.0103
CERTF	Active	YDPF-CT	Youth Development Professional	Specialization	Social/Behavioral Sciences and Human Services	18.00	0451159906	51.1504
CERTN	Active	AIRU-CT	AI Responsible Use	Specialization	Technology	9.00	0511020113	11.0201
CERTN	Active	DIG-CT	Digital Graphic CT	Specialization	Arts, Humanities and Design	15.00	0650010208	50.0102
CERTN	Active	DMFND-CT	Digital Media/Multimedia Found	Specialization	Arts, Humanities and Design	15.00	0610010507	10.0105
CERTN	Active	DVPRD-CT	Digital Media/MM Video Prodn	Specialization	Arts, Humanities and Design	12.00	0609070210	09.0702
CERTN	Active	ELECT-CT	Electronics Aide	Specialization	Engineering, Manufacturing, and Building Arts	12.00	0615030313	15.0303
CERTN	Active	ENTR-CT	Business Entrepreneurship	Specialization	Business	12.00	0552070308	52.0201
CERTN	Active	FBS-CT	Food and Beverage Specialist	Specialization	Business	12.00	0252090507	52.0905
CERTN	Active	FOSU-CT	Fire Officer Supervisor	Specialization	Public Safety, Policy and Legal Studies	12.00	0743020111	43.0201
CERTN	Active	ITSP-CT	Infant Toddler Specialization	Specialization	Education	12.00	0419070907	19.0709
CERTN	Active	LEAN-CT	Lean-Six Sigma Green Belt	Specialization	Engineering, Manufacturing, and Building Arts	12.00	0615070203	15.0702
CERTN	Active	MGT/LDR-CT	Mgmt-Leadership CT	Specialization	Business	12.00	0552020103	52.0201
CERTN	Active	PRSP-CT	Preschool Specialization	Specialization	Education	12.00	0419070908	19.0709
CERTN	Active	RAPID-CT	Rapid Prototypng and Design	Specialization	Engineering, Manufacturing, and Building Arts	12.00	0615130211	15.1302
CERTN	Active	RDS-CT	Rooms Division Specialist	Specialization	Business	13.00	0252090405	52.0904
CERTN	Active	RESACC-ATC	Adv Adult Critical Resp Care	Specialization	Health Sciences and Veterinary Technology	15.00	0351090866	51.0908
CERTN	Active	RESNPS-ATC	Adv Neonatal/Ped Resp Care	Specialization	Health Sciences and Veterinary Technology	11.00	0351090866	51.0908

Source: Curriculum office
Revised: 1/5/2026



The Board of Trustees of St. Petersburg College affirms its equal opportunity policy in accordance with the provisions of the Florida Educational Equity Act and all other relevant state and federal laws, rules and regulations. The College will not discriminate on the basis of race, color, ethnicity, religion, sex, age, national origin, marital status, pregnancy, sexual orientation, gender identity, genetic information, or against any qualified individual with disabilities in its employment practices or in the admission and treatment of students. Recognizing that sexual harassment constitutes discrimination on the basis of sex and violates this Rule, the College will not tolerate such conduct. Should you experience such behavior, please contact the Equal Access/Equal Opportunity Office at 727-341-3261; by mail at P.O. Box 13489, St. Petersburg, FL 33733-3489; or by email at eaao_director@spcollege.edu



Institutional Research

St. Petersburg College
PO Box 13489
St. Petersburg, FL 33733-3489